

# High Performance 2 INCH MOBILE PRINTER WSP-i250

The Most rugged and reliable performance for diverse industry field.  
The advent of i-family portable printer leads to huge breakthrough in mobile communication.

## Features

- Durable Rugged Design
- Water-resistant construction
- High speed (**130mm/sec**)
- Wireless LAN (802.11 b/g) interface [option]
- MSR : Support Triple tracks (1&2&3 tracks) [option]
- Support Graphic LCD(128×32dots) with Blue LED Backlight
- High performance : Print labels & Support back feeding
- One touch paper cover
- Printer door open & Paper-out sensor
- In field programming – Update Firmware, Download Fonts and Logos
- Compact and easy to carry around
- Flow control : Software (XON/XOFF)
- ※ Hardware flow control not supported in printer.



MSR (optional)



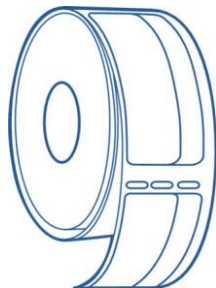
Belt clip



## Applications

Healthcare, Warehouse, Logistics, Field sales and service, Transportation, Hospitality, Parking, Utility billing, safety, Material management, Law enforcement

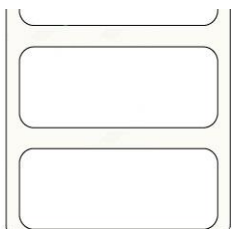
# Best for LABEL printing



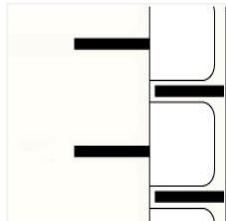
## Specification

Item	Specification
	<b>MSR &amp; Smart card reader (option), IP54</b>
Printing	Direct thermal line printing
Characters per line	42cpl (MAX)
Characters size	Eng : 9*24 dots, 12*24 dots Kor : 16*24 dots, [24*24 dots]
Optional Characters	Simplified/Traditional Chinese, Cyrillic, Turkish, Persian, Latin9 and Others upon request.
Resolution	203 dpi, 8 dots/mm
Print width	2-inch (48mm, 384dots)
Printing speed	130 mm/sec (MAX)
Dimensions	92.12 x 140.56 x 59.75mm (Standard)      92.12 x 144.47 x 59.75mm (MSR option)
Weight (w/o paper)	405g (including battery & case).
Interface	<ul style="list-style-type: none"> <li>· USB</li> <li>· Bluetooth Ver 3.0 or 4.0</li> <li>· Wireless LAN (802.11b/g) [option]</li> </ul>
Paper supplied	Thermal roll paper (58mm wide, 50 $\phi$ ) , Paper thickness : 60 $\pm$ 5 $\mu$ m
Barcodes	1-dimension:Code128, EAN 128, Code39, I2/5, Code93, UPC, EAN, KAN, JAN, CODABAR 2-dimension:PDF417, QR Code, DATA Matrix , MAXI Code
Driver	Microsoft Windows XP / VISTA / 10, Windows CE, Linux, Android OS driver compatible
H/W Spec.	MCU : 32 bits RISC, FLASH : 8 Mbytes, RAM : 16 Mbytes
Receive buffer size	1M bytes
Battery	Rechargeable 7.4V DC , 1800mAh or 2200mAh (Li-ion)
Battery duration	1 hour continuous printing
Battery charger	Input (100~250VAC, 50~60Hz), Output(8.4VDC/0.8A), 4hours full charge time
MSR	ISO 7810/7811/7812, Triple tracks (1&2&3 Track Reading) **Supports 3DES & AES encryption (3DES is standard) [option]** **DUKPT key management**
Smart card reader	ISO 7816 Compliant (EMV level 1 Certified) / T=0, T=1 support / 2 SAM (Security Application Module) [Option]
LCD	128 $\times$ 32 Dots FSTN (Blue LED Backlight)
Sensors	Cover open Sensor, Paper-end Sensor, Black mark Sensor, Gap Sensor

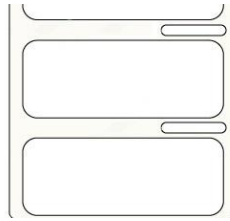
## Recommended Label types



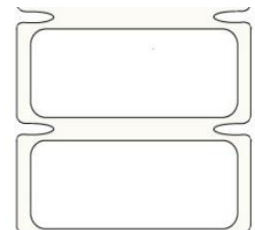
Gap Label



Black mark Label



Slot Label



Notch Label