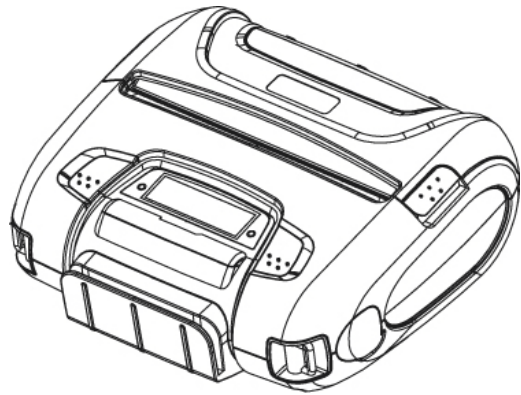


# WSP-i450

(4 )

Rev. 2.0



가 448 ,

3 501

: +82-2-2107-3700

: +82-2-2107-3707

<http://www.woosim.com>

|

WSP-i450 4

Copyright 2010

|



|

가

|

!

- u (150.9×135.7×63.3mm)
- u (735g)
- u
- u (70mm/sec, MAX)
- u (203dpi : 8dots/mm)
- u UART(RS-232C or TTL), Bluetooth Ver2.1 + EDR,  
USB[ ], Wireless LAN(IEEE802.11b/g)[ ]
- u (MSR : Magnetic Stripe Reader) [ ]
- u [ ]
- u LCD (128x32dots)
- u , , LED
- u CLAMSHELL
- u
- u Door open & Paper-out
- u 가
- u - ,
- u Microsoft Windows XP/VISTA/7/CE/Linux/Android
- u : 1.5m ( )
- u , (IP54 - Certified)
- u : (XON/XOFF)
- u



I

U

: -10°C to 50°C

: 30% to 80%

IrDA

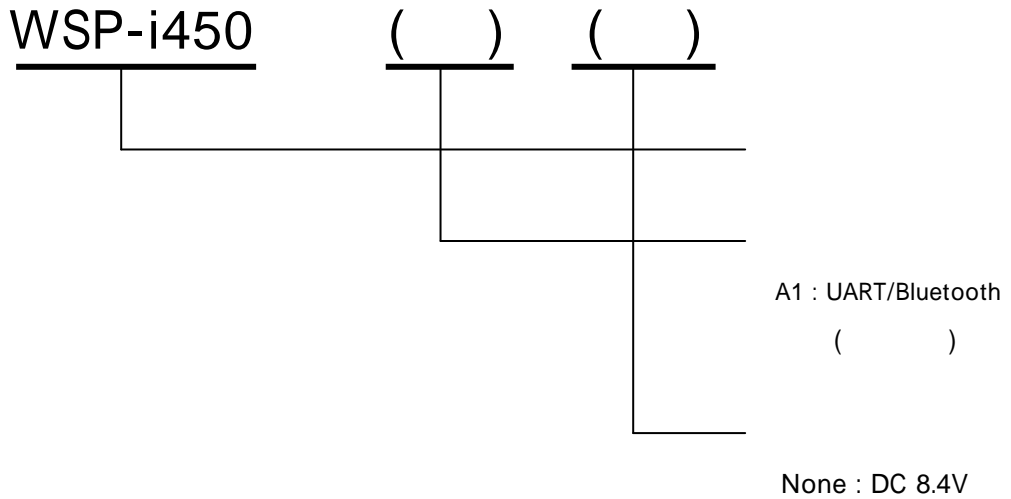
U

- 1. .... 7
  - 1.1. .... 7
  - 1.2 Part Number ..... 7
  - 1.3. .... 8
- 2. .... 10
  - 2.1. .... 10
  - 2.2. .... 11
  - 2.3. .... 12
  - 2.4. .... 13
  - 2.5. .... 14
    - 2.5.1. .... 14
    - 2.5.2. SAM & ..... 14
    - 2.5.3. .... 15
  - 2.6. .... 16
  - 2.7. .... 19
    - 2.7.1. MAC Address ..... 19
    - 2.7.2. .... 19
- 3. .... 20
  - 3.1. UART(RS-232C or TTL) & USB..... 20
  - 3.2. .... 21
  - 3.3. .... 21
- 4. .... 22
  - 4.1. .... 22
  - 4.2. .... 23
    - 4.2.1. .... 23
    - 4.2.2. ( )..... 23
- 5. .... 24
  - 5.1. .... 24
  - 5.2. .... 25

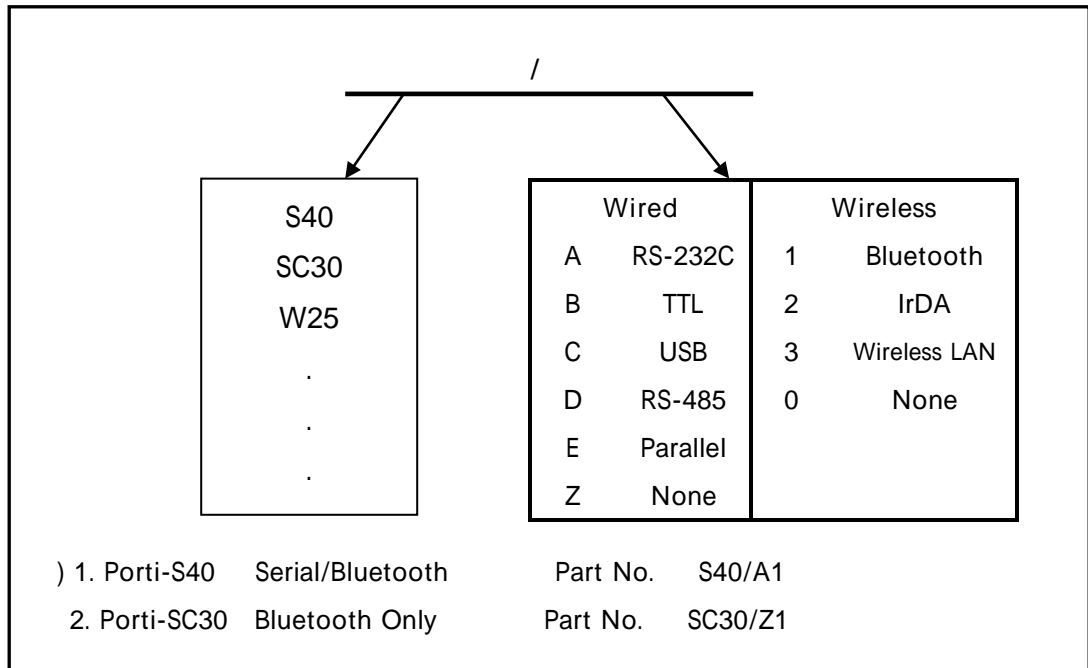
- 5.3. ....25
  - 5.3.1. ....25
  - 5.3.2. ....26
- 5. ....27
  - 5.1. ....27
  - 5.2. ....27
- 6. ....28

1.

1.1.



1.2 Part Number



## 1.3.

	92cpl (MAX)
	: 9*24dots, 12*24dots : 16*24dots, [24*24dots]
	Simplified/Traditional Chinese, Arabic, Cyrillic, Russian, Turkish, Greek, Japanese, Persian, Latin9 and Others upon request.
	203dpi, 8dots/mm
	4-inch (104mm, 832dots)
	70mm / sec (MAX)
	150.9×135.7×63.3mm mm
	735g ( & ) [ ] 741g ( & ) [MSR ]
	UART(RS-232C or TTL), Bluetooth Ver 2.1 + EDR, USB[ ], Wireless LAN interface(IEEE802.11b/g) [ ]
	( 113mm, 50ø)
	1 : Code128, Code39, I2/5, Code93 UPC, EAN, KAN, JAN, CODABAR 2 : PDF417, QR Code, DATA Matrix
	Microsoft Widows XP / VISTA / 7 Windows CE, Linux, Android OS
	MCU : 32bits RISC, FLASH : 4M bytes, RAM : 8M bytes 1M bytes
MSR [ ]	ISO 7810 / 7811 / 7812 1&2&3
[ ]	ISO 7816 Compliant (EMV level 1 Certified) / T=0, T=1 support / 1 SAM (Security Application Module)
LCD	128×32 Dots FSTN ( LED )
	가 7.4V DC, 2200mAh ( )

( ... )

	1	
	(100~250V AC 50~60Hz) (8.4VDC/0.8A), - 4	
		-10°C ~ 50°C ( ) -10°C ~ 70°C ( )
		30% - 80% ( ) 10% - 90% ( )
	Mechanical	37,000,000 lines
	Head	50 Km

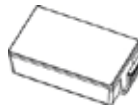
< 1 >

2.

2.1.



WSP-i450



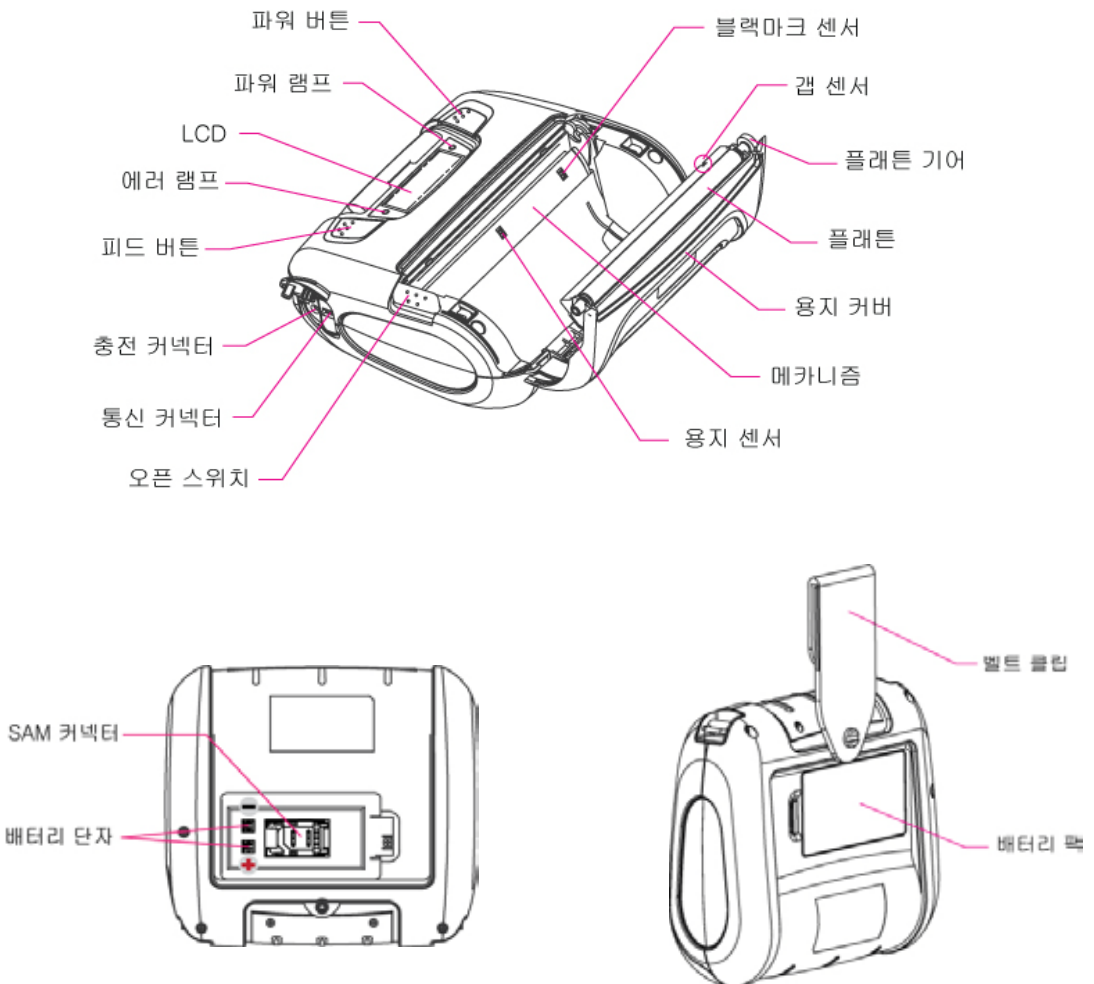
MSR



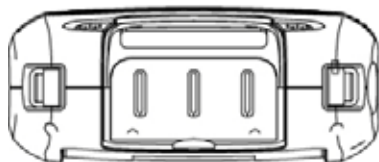
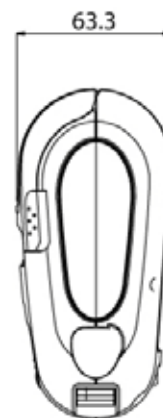
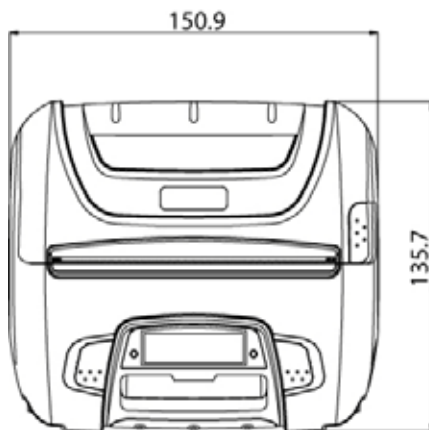
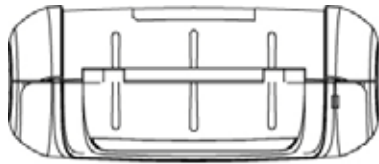
1 SAM



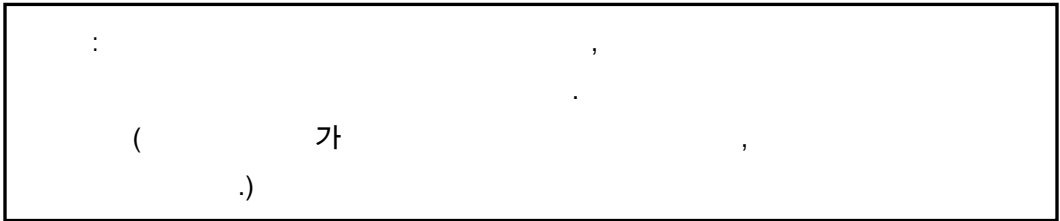
2.2.



2.3.

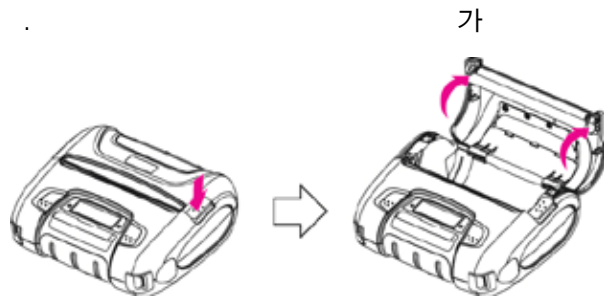


2.4.

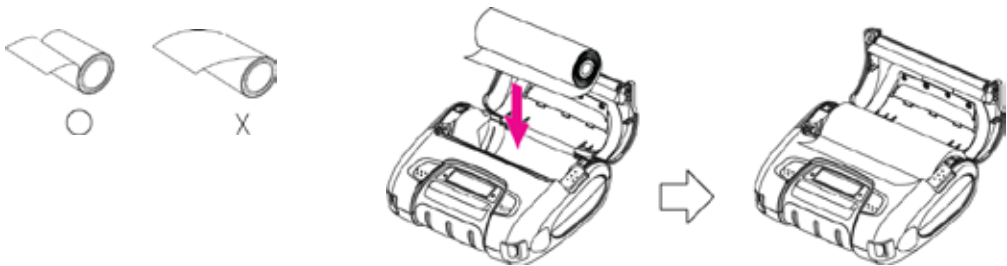


1. 가 가

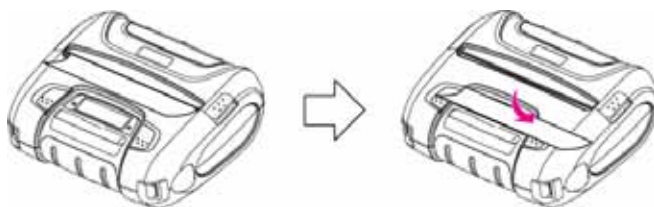
2.



3.



4.



## 2.5.

### 2.5.1.

: DC 8.4V / 0.8A

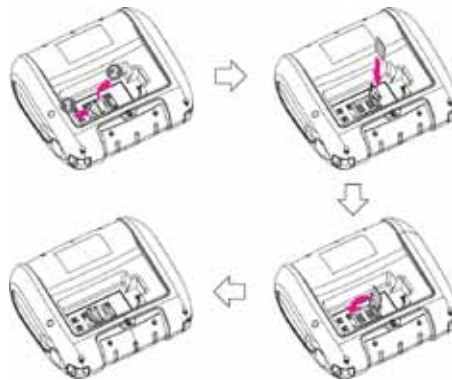
### 2.5.2. SAM &



SAM

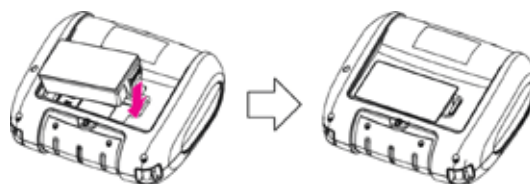
가 가

SAM



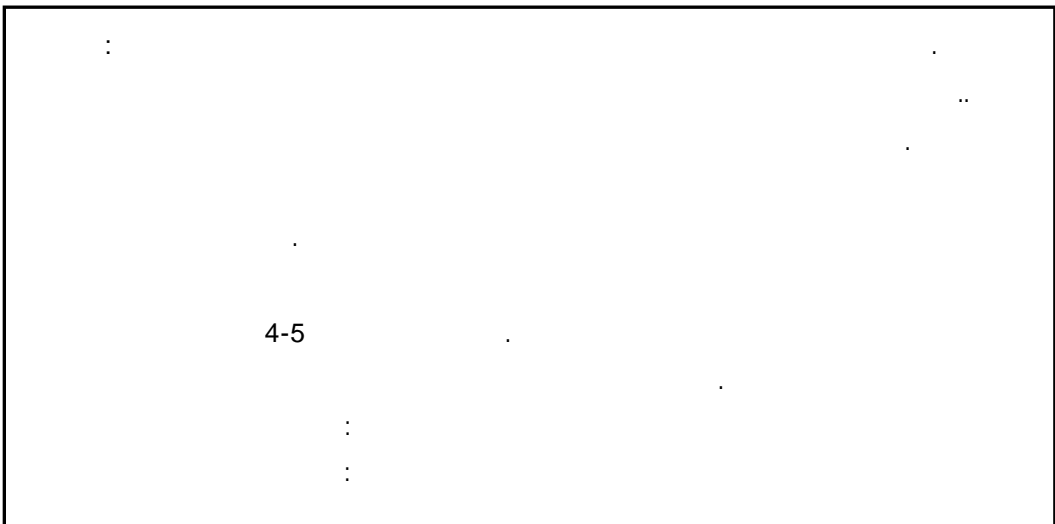
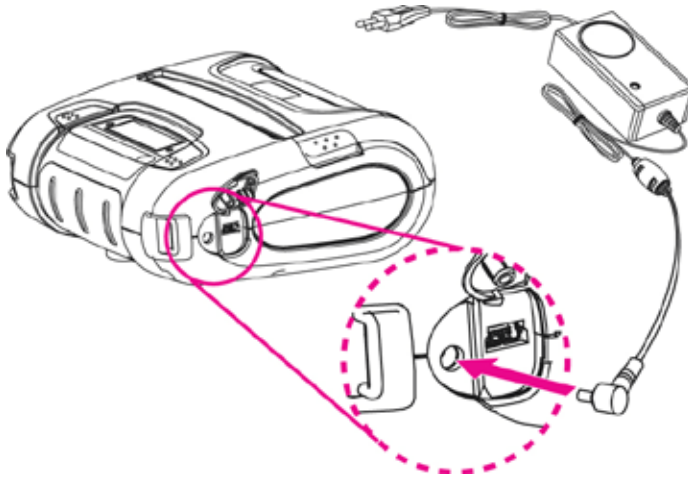
가 가

가



2.5.3.

가



## 2.6.

. ( 2 )  
 | : .  
 | : .  
 [ ]  
 UART/ 9600 bps/8 Data bit/ No parity/1 Stop bit/ Density  
 low / Low / Use / Low / 5 minutes  
 Bluetooth / 57600 bps / 7 Data bit / Odd parity / 2 stop bit /  
 Density high / High / No use / Medium 1 / No use ,

U 가 5 .  
 ® LCD . (UART)  
 ® 2 , 가 Bluetooth .  
 U 1 .  
 ® LCD . (9600 bps)  
 ® 3 , 가 57600 bps .  
 U 1 .  
 ® LCD . (8 Data bit)  
 ® 1 , 가 7 Data bit .  
 U 1 .  
 ® LCD . (No parity)  
 ® 1 , 가 Odd parity .  
 U 1 .  
 ® LCD . (1 stop bit)  
 ® 1 , 가 2 stop bit .  
 U 1 .  
 ® LCD . (Density low)  
 ® 2 가 Density high .

U		1	.	
®	LCD		.	(Low)
®		1	,	가 High
U		1	.	
®	LCD		.	(Use)
®		1	,	가 No use
U		1	.	
®	LCD		.	(Low)
®		1		가 Medium 1
U		1	.	
®	LCD		.	(5 minutes)
®		1	,	No use

Bluetooth / 57600bps / 7 data bit / Odd parity / 2 stop bit / Density high  
 / High/No use / Medium 1 / No use

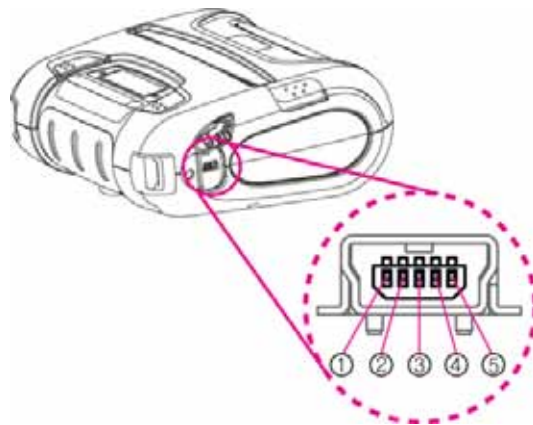
	Bluetooth	WLAN
Communication Port	UART(RS-232C)	UART(RS-232C)
	Protocol UART (RS-232C)	Protocol UART (RS-232C)
	Bluetooth	WLAN
	Protocol Bluetooth	Protocol WLAN
Baud Rate	9600 bps	
	19200 bps	
	38400 bps	
	57600 bps	
	115200 bps	
Data Bit	7 Data bit	
	8 Data bit	
Parity Bit	No Parity	
	Odd Parity	
	Even Parity	
Stop Bit	1 Stop bit	
	2 Stop bit	
Density	Density Low	
	Density Medium	
	Density High	
Quality	Low	
	High	
Mark	No use	
	Use	

...



### 3.

#### 3.1. UART(RS-232C or TTL) & USB



WSP-i450

UART(RS-232C or TTL) & USB

가

5 USB

##### UART(RS-232C or TTL)

1	TxD	Output	Transmit Data
2	RxD	Input	Receive Data
3	CTS	-	-
4	NC.	-	-
5	GND	-	Ground

##### USB

1	VCC	+5V
2	DM	DATA “-”
3	DP	DATA “+”
4	NC.	-
5	GND	Ground

3.2.

	Bluetooth Ver2.1 + EDR / Class2 (10m)
	2.4GHz ISM BAND
	57600bps Fixed.
	8 Data bit Fixed.
	No parity Fixed.
	1 Stop bit Fixed.

3.3.

	Network	IEEE802.11b/g
	TCP, UDP, IP, ICMP, ARP, DHCP, PPPoE DNS lookup, DDNS(Dynamic DNS), WEP	
	T2S	TCP Server Mode
	COD	TCP Client Mode
	ATC	TCP Server / Client (AT command emulation)
	U2S	UDP

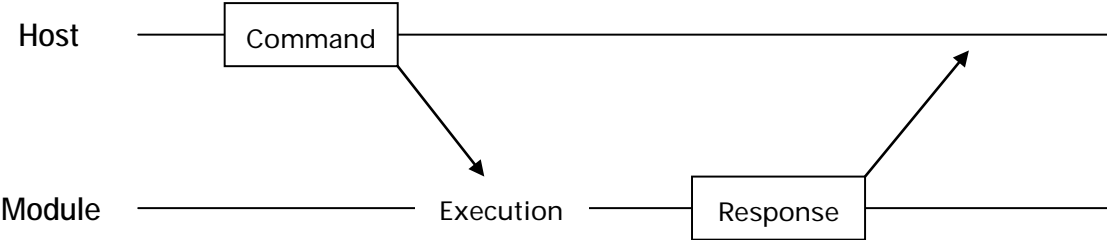
## 4.

### 4.1.

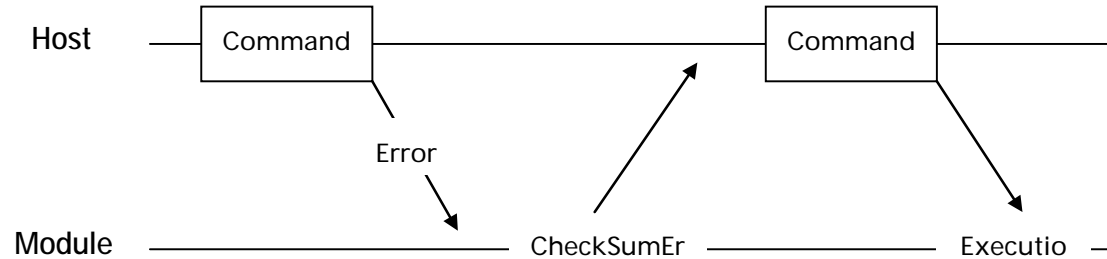
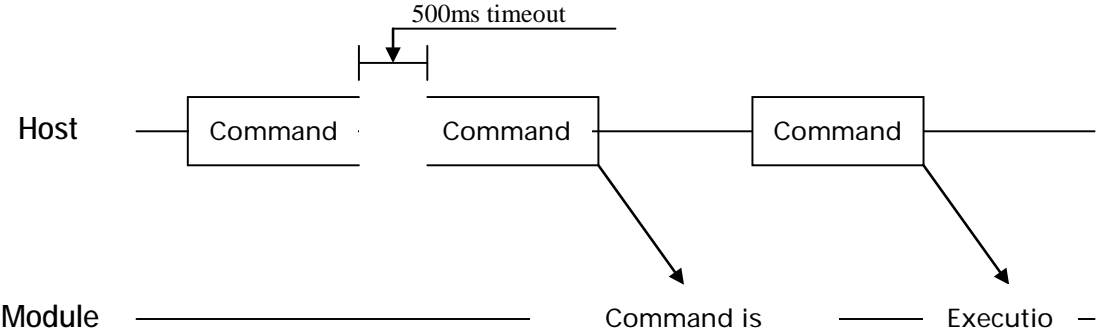
- Contact Smart Card Reader Module for ISO/IEC-7816
- Support Asynchronous Protocol T=0,T=1
- Smart Card Connection
  - Short Circuit Current Limitation
  - 6KV ESD Protection on whole Smart Card Interface
  - Connector : Friction Type with Smart Card presence detection
- 1 SAM (Security Application Module)
- EMV Level 1 Certified

4.2.

4.2.1.

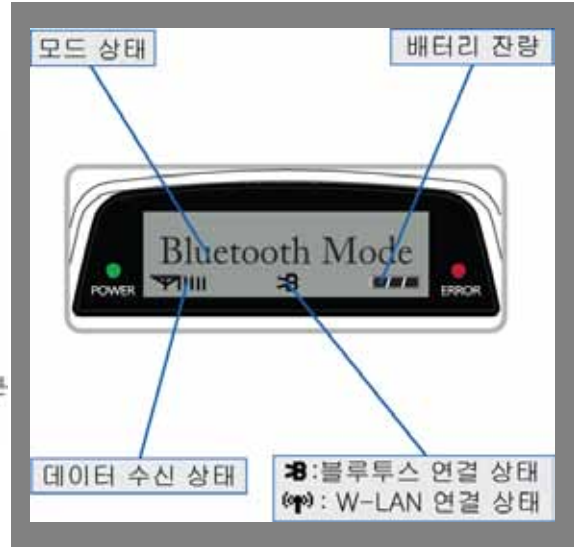
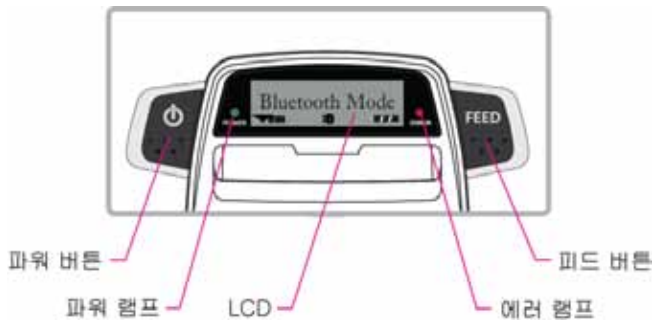


4.2.2. ( )



# 5.

## 5.1.



u

- : ON/OFF
- : 5
- : 가 5
- : (2.6 )

: UART (RS-232C or TTL)

u

- :
- : 가 , 가 , ,

uLCD

- LCD
- ( i.e: , , , )

## 5.2.

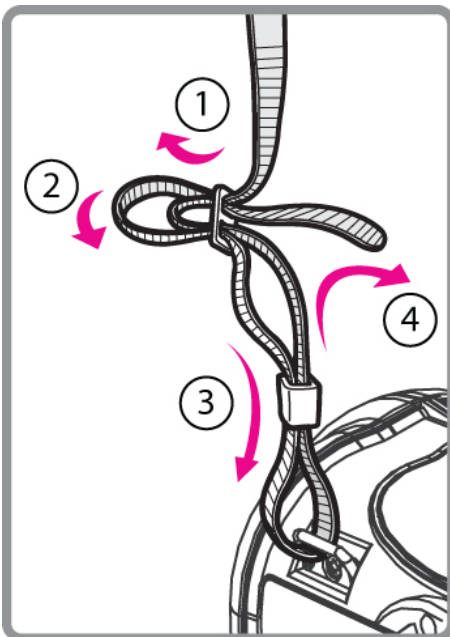
- 1.
- 2.
- 3.
- 4.
- 5.

( )

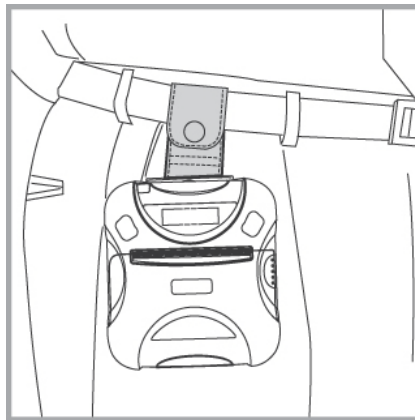
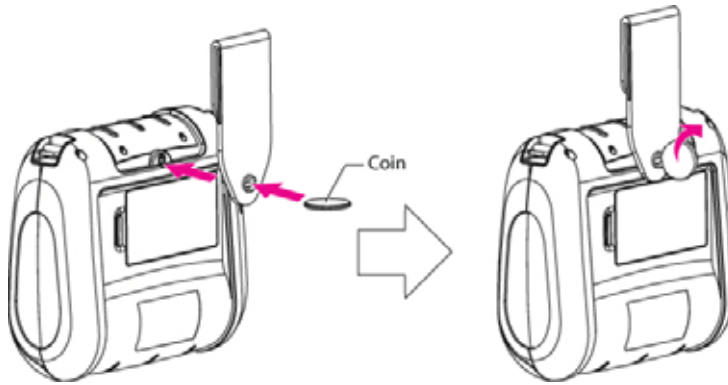
가

## 5.3.

### 5.3.1.



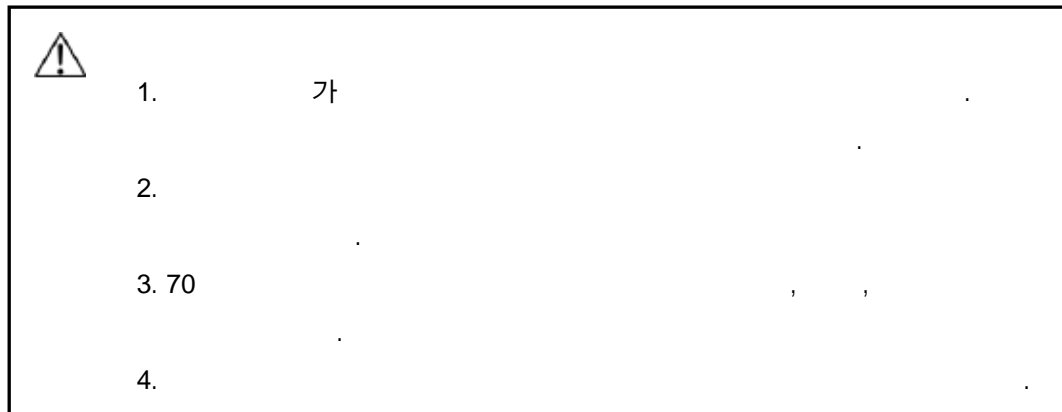
5.3.2.



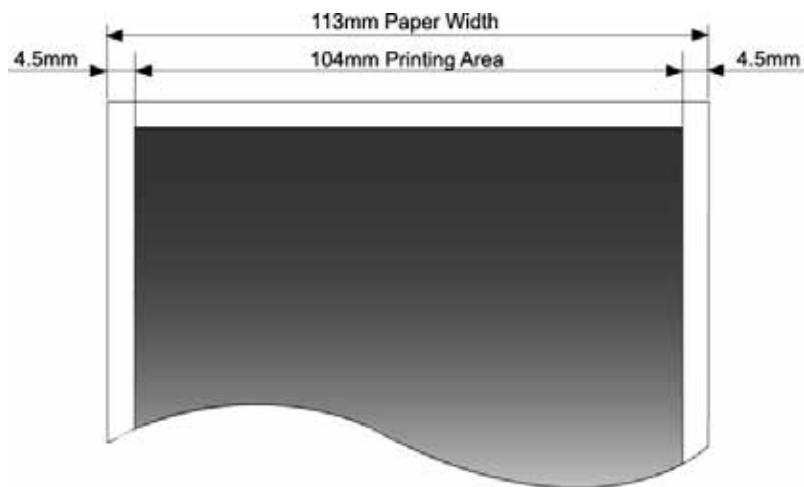
## 5.

### 5.1.

- :
- : 104mm
- :  $60 \pm 5 \mu\text{m}$
- :  $\text{Ø}50\text{mm}$
- :



### 5.2.



6.

2010.12.24	2.0	2.2	가( )