

# Operator's Manual

## WSP-i350

(3 )

Rev. 3.0



가 448 ,

3 501

: +82-2-2107-3700

: +82-2-2107-3707

<http://www.woosim.com>

|

WSP-i350 3

Copyright 2010

|



|

가

|

!

, , , , , , , ,

.

- u (120×130.5×58.3mm)
- u (560g)
- u
- u (80mm/sec, MAX)
- u (203dpi : 8dots/mm)
- u UART(RS-232C or TTL), Bluetooth Ver2.1 + EDR, USB[ ],  
IrDA Ver1.0(SIR)[ ], Wireless LAN (IEEE802.11b/g)[ ]
- u (MSR : Magnetic Stripe Reader) [ ]
- u LCD (128x32dots)
- u ,
- u , LED
- u CLAMSHELL
- u
- u Door open & Paper-out
- u 가
- u - ,
- u Microsoft Windows XP/VISTA/7/CE/Linux/Android
- u : 1.5m ( )
- u , ( IP54 - Certified )
- u : (XON/XOFF)
- u



I

U

: -10°C to 50°C

: 30% to 80%

IrDA

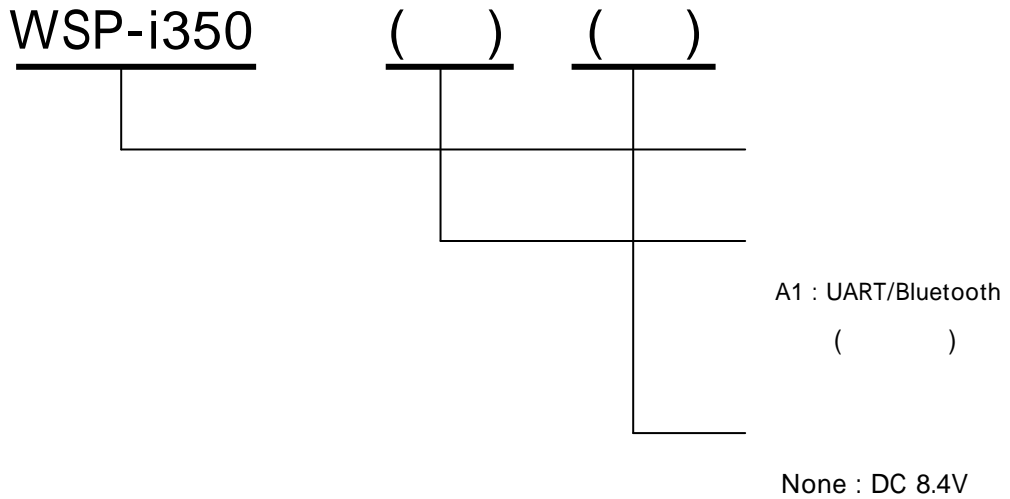
U

- 1. .... 7
  - 1.1. .... 7
  - 1.2 Part Number ..... 7
  - 1.3. .... 8
- 2. .... 10
  - 2.1. .... 10
  - 2.2. .... 11
  - 2.3. .... 12
  - 2.4. .... 13
  - 2.5. .... 14
    - 2.5.1. .... 14
    - 2.5.2. .... 14
    - 2.5.3. .... 15
  - 2.6. .... 16
  - 2.7. .... 19
    - 2.7.1. MAC Address ..... 19
    - 2.7.2. .... 19
- 3. .... 20
  - 3.1. UART(RS-232C or TTL) & USB..... 20
  - 3.2. IrDA ..... 21
  - 3.3. .... 22
  - 3.4. .... 22
- 4. .... 23
  - 4.1. .... 23
  - 4.2. .... 24
  - 4.3. .... 24
    - 4.3.1. .... 24
    - 4.3.2. .... 25
- 5. .... 26

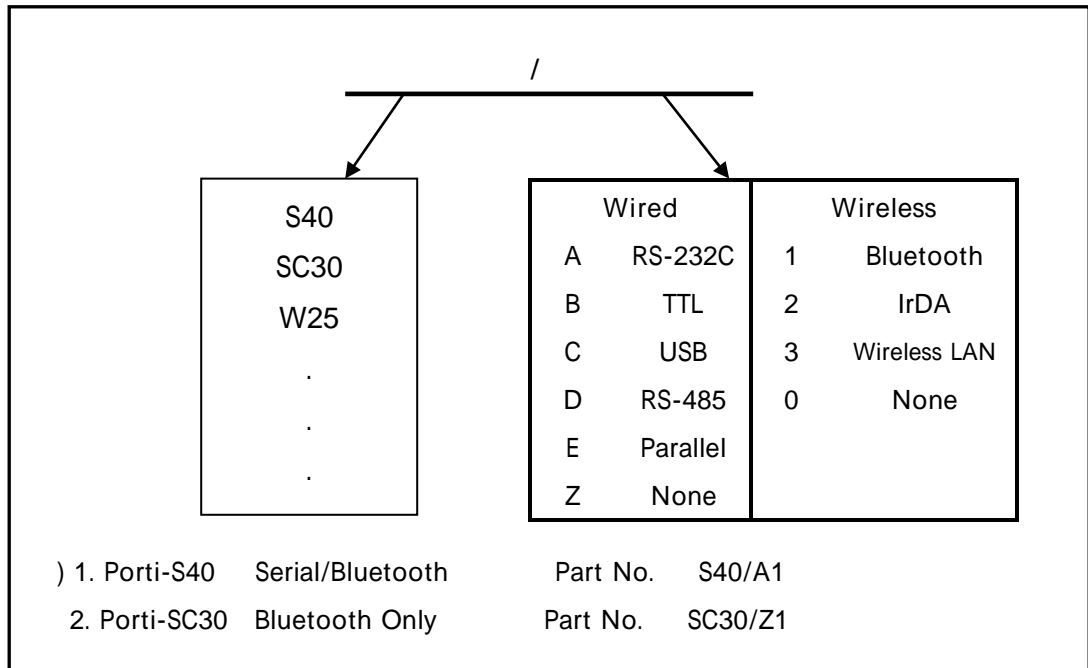
5.1. ....26  
5.2. ....26

1.

1.1.



1.2 Part Number



1.3.

	64cpl (MAX)
	: 9*24dots, 12*24dots : 16*24dots, [24*24dots]
	Simplified/Traditional Chinese, Arabic, Cyrillic, Russian, Turkish, Greek, Japanese, Persian, Latin9 and Others upon request.
	203dpi, 8dots/mm
	3-inch (72mm, 576dots)
	80mm / sec (MAX)
	120 * 130.5* 58.3 mm
	560g ( ) [ ] 566g ( ) [MSR ]
	UART(RS-232C or TTL), Bluetooth Ver 2.1 + EDR, IrDA Ver1.0(SIR)[ ], USB[ ] Wireless LAN interface(IEEE802.11b/g) [ ]
	( 80mm, 50ø)
	1 : Code128, Code39, I2/5, Code93 UPC, EAN, KAN, JAN, CODABAR 2 : PDF417, QR Code, DATA Matrix
	Microsoft Widows XP / VISTA / 7 Windows CE, Linux, Android OS
	MCU : 32bits RISC, FLASH : 4M bytes, RAM : 8M bytes 1M bytes
MSR [ ]	ISO 7810 / 7811 / 7812 1&2 or 2&3
LCD	128x32 Dots FSTN ( LED )

( ... )

	가 7.4V DC, 1,800mAh ( )
	1
	(100~250V AC 50~60Hz) (8.4VDC/0.8A), - 4
	-10°C ~ 50°C ( ) -10°C ~ 70°C ( )
	30% - 80% ( ) 10% - 90% ( )
	Mechanical 37,000,000 lines
	Head 50 Km

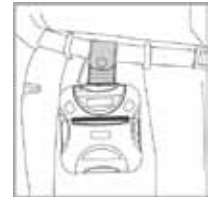
< 1 >

## 2.

### 2.1.

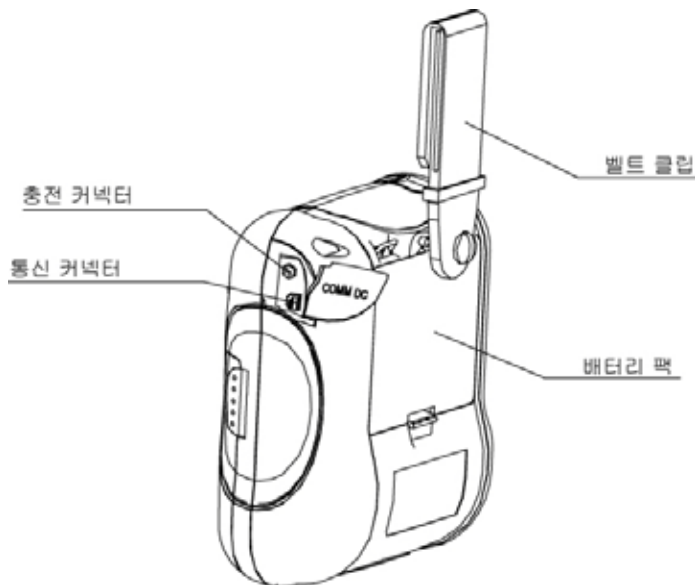
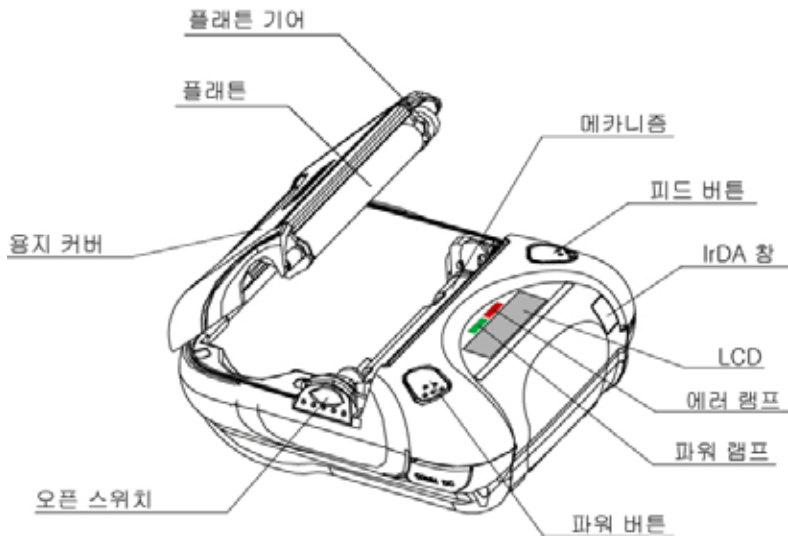


WSP-i350

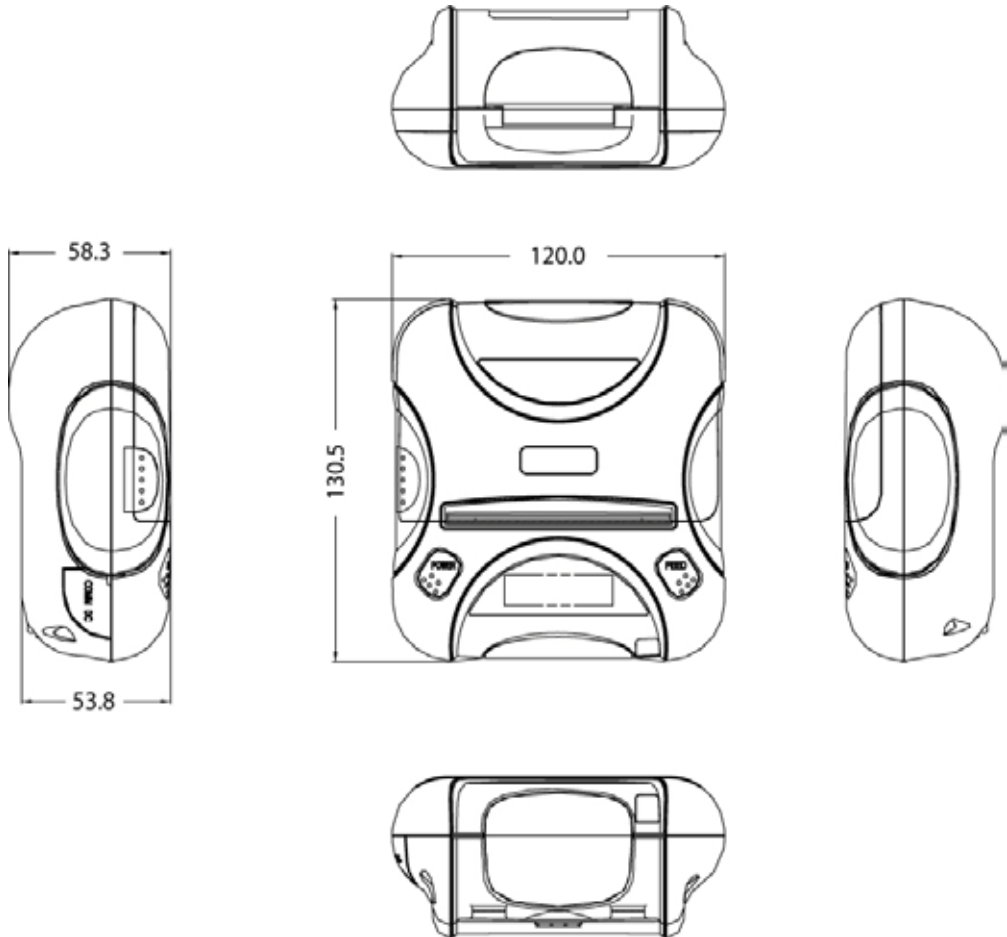


MSR

2.2.



2.3.

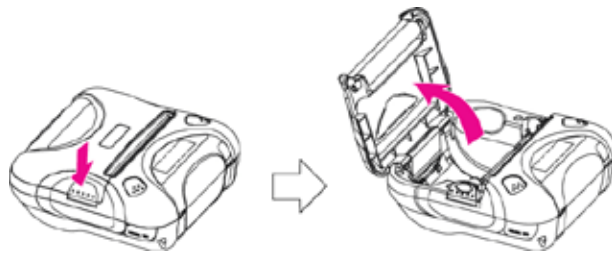


2.4.

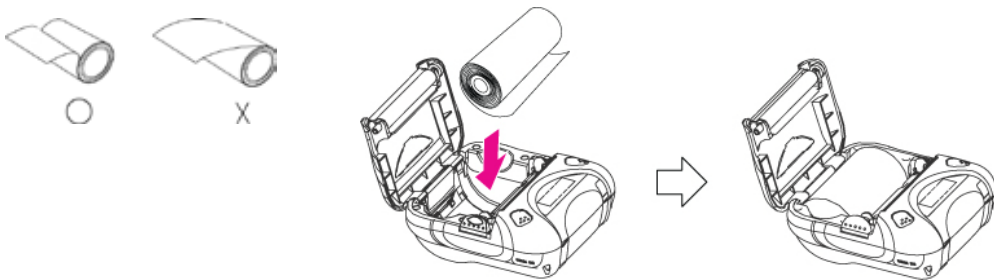
1. ( ) 가  
( ) 가

1. 가 가  
가

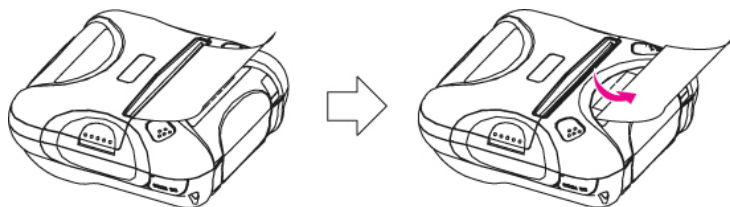
2. 가



3.



4.



2.5.

2.5.1.

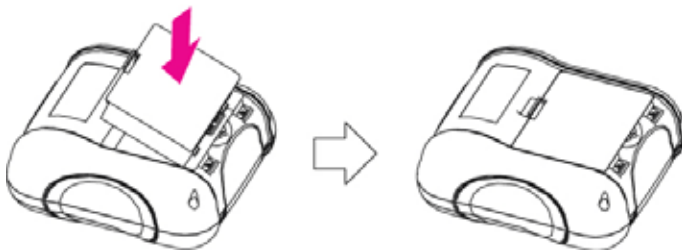
: DC 8.4V / 0.8A

2.5.2.



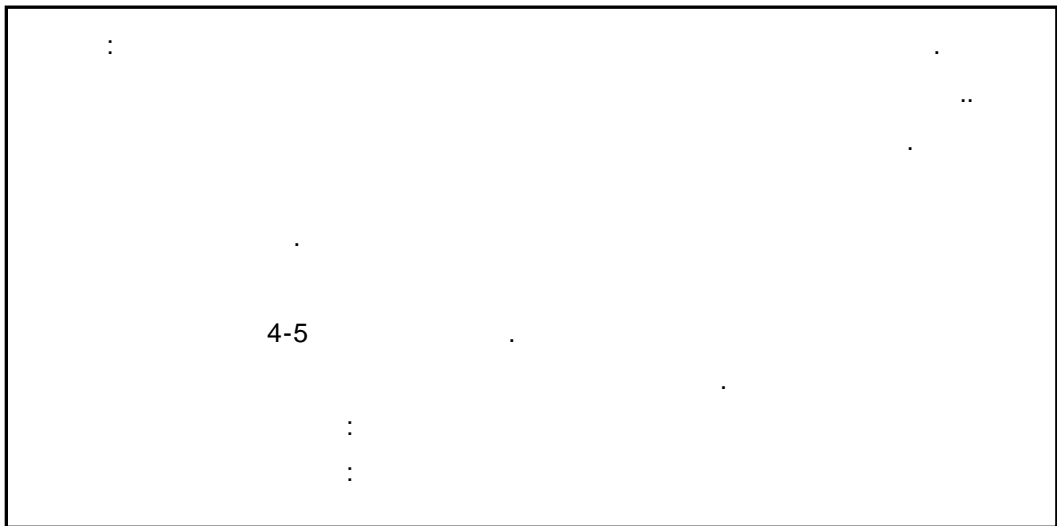
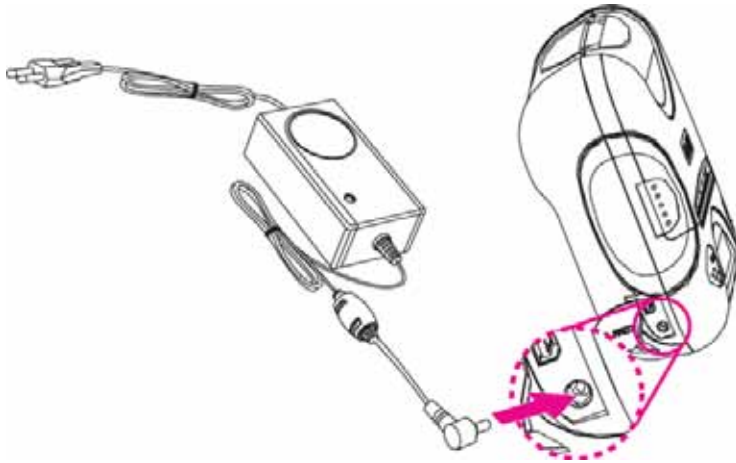
가 가

가



2.5.3.

가



4-5

:  
:

2.6.

. ( 2 )  
 | :  
 | :  
 [ ]  
 UART/ 9600 bps/8 Data bit/ No parity/1 Stop bit/ Density  
 low / Low / Use / Low / 5 minutes  
 Bluetooth / 57600 bps / 7 Data bit / Odd parity / 2 stop bit /  
 Density high / High / No use / Medium 1 / No use

- U 가 5  
 ® LCD . (UART)  
 ® 2 , 가 Bluetooth
- U 1  
 ® LCD . (9600 bps)  
 ® 3 , 가 57600 bps
- U 1  
 ® LCD . (8 Data bit)  
 ® 1 , 가 7 Data bit
- U 1  
 ® LCD . (No parity)  
 ® 1 , 가 Odd parity
- U 1  
 ® LCD . (1 stop bit)  
 ® 1 , 가 2 stop bit
- U 1  
 ® LCD . (Density low)  
 ® 2 가 Density high

U		1	.	
®	LCD		.	(Low)
®		1	,	가 High
U		1	.	
®	LCD		.	(Use)
®		1	,	가 No use
U		1	.	
®	LCD		.	(Low)
®		1	,	가 Medium 1
U		1	.	
®	LCD		.	(5 minutes)
®		1	,	No use

Bluetooth / 57600bps / 7 data bit / Odd parity / 2 stop bit / Density high  
 / High/No use / Medium 1 / No use

	IrDA	Bluetooth	WLAN
Communication Port	UART(RS-232C)	UART(RS-232C)	UART(RS-232C)
	Protocol UART (RS-232C)	Protocol UART (RS-232C)	Protocol UART (RS-232C)
	Raw IrDA	Bluetooth	WLAN
	Protocol IrDA	Protocol Bluetooth	Protocol WLAN
	Standard IrDA		
Baud Rate	9600 bps		
	19200 bps		
	38400 bps		
	57600 bps		
	115200 bps		
Data Bit	7 Data bit		
	8 Data bit		
Parity Bit	No Parity		
	Odd Parity		
	Even Parity		
Stop Bit	1 Stop bit		
	2 Stop bit		
Density	Density Low		
	Density Medium		
	Density High		
Quality	Low		
	High		
Mark	No use		
	Use		

...

Sensor	Low
	Medium1
	Medium2
	High
Power Down	No use
	1 minute
	2 minute
	3 minute
	4 minute
	5 minute

< 2 >

## 2.7.

### 2.7.1. MAC Address

u

가 2  
MAC Address가

### 2.7.2.

u

가 MAC Address가

u

, LCD IP Address가

u

, LCD Subnet mask가

u

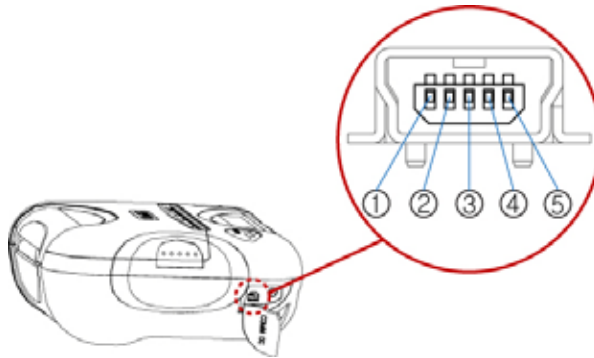
, LCD Gateway IP가

u

, LCD DNS sever IP가

### 3.

#### 3.1. UART(RS-232C or TTL) & USB



WSP-i350                      UART(RS-232C or TTL) & USB                      가 ,  
5                      USB

##### UART(RS-232C or TTL)

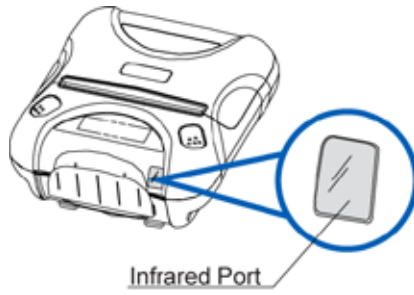
1	TxD	Output	Transmit Data
2	RxD	Input	Receive Data
3	CTS	-	-
4	NC.	-	-
5	GND	-	Ground

##### USB

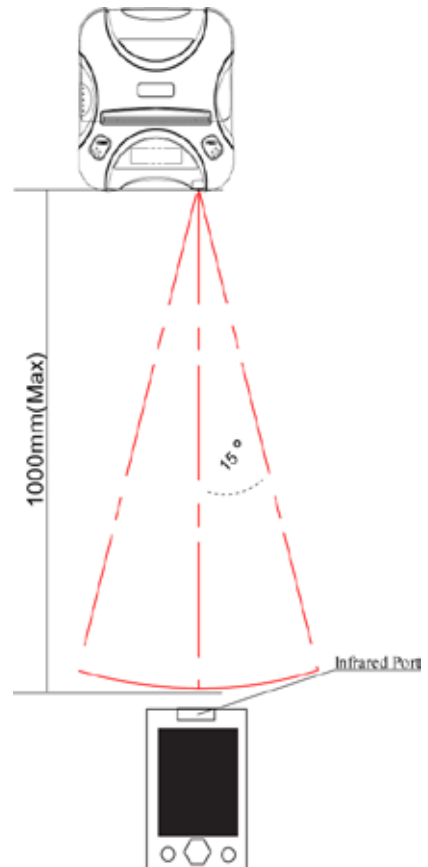
1	VCC	+5V
2	DM	DATA “-”
3	DP	DATA “+”
4	NC.	-
5	GND	Ground

### 3.2. IrDA

WSP-i350



- 1) IR 가  
PDA 가
- 2) PDA  
50cm  
15°



3.3.

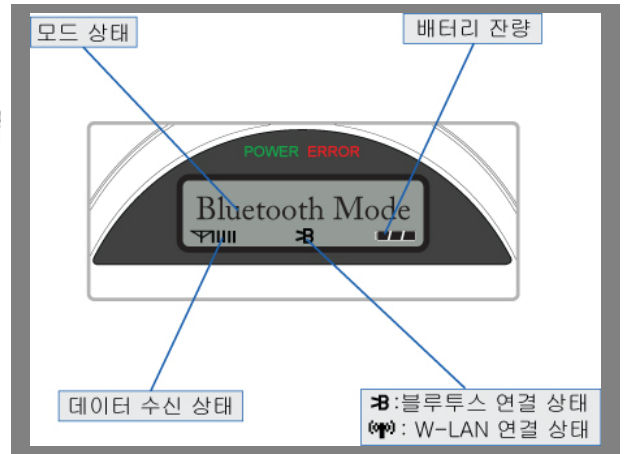
	Bluetooth Ver2.1 + EDR / Class2 (10m)
	2.4GHz ISM BAND
	57600bps Fixed.
	8 Data bit Fixed.
	No parity Fixed.
	1 Stop bit Fixed.

3.4.

	Network	IEEE802.11b/g
	TCP, UDP, IP, ICMP, ARP, DHCP, PPPoE DNS lookup, DDNS(Dynamic DNS), WEP	
	T2S	TCP Server Mode
	COD	TCP Client Mode
	ATC	TCP Server / Client (AT command emulation)
	U2S	UDP

# 4.

## 4.1.



u

- : ON/OFF
- : 5
- : 가 5
- : (2.6 )

: UART (RS-232C or TTL)

u

- :
- : 가 , 가 ,

uLCD

- LCD
- ( i.e: , , , )

## 4.2.

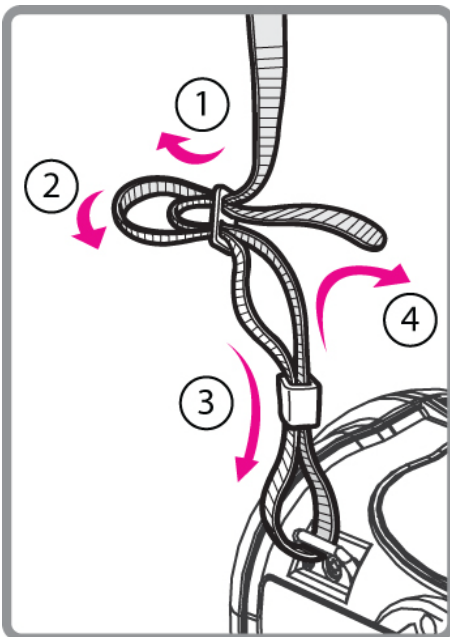
- 1.
- 2.
- 3.
- 4.
- 5.

( )

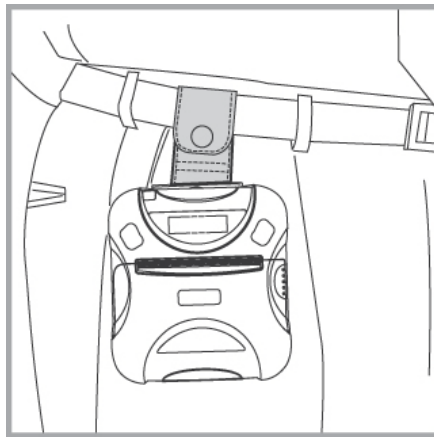
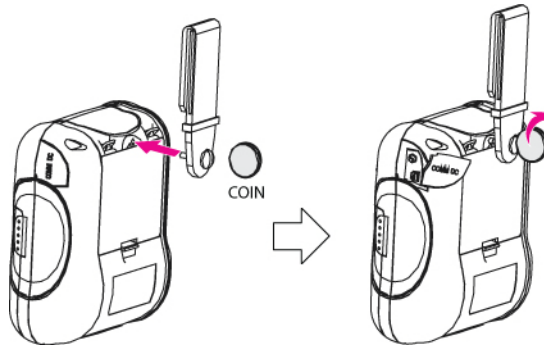
가

## 4.3.

### 4.3.1.



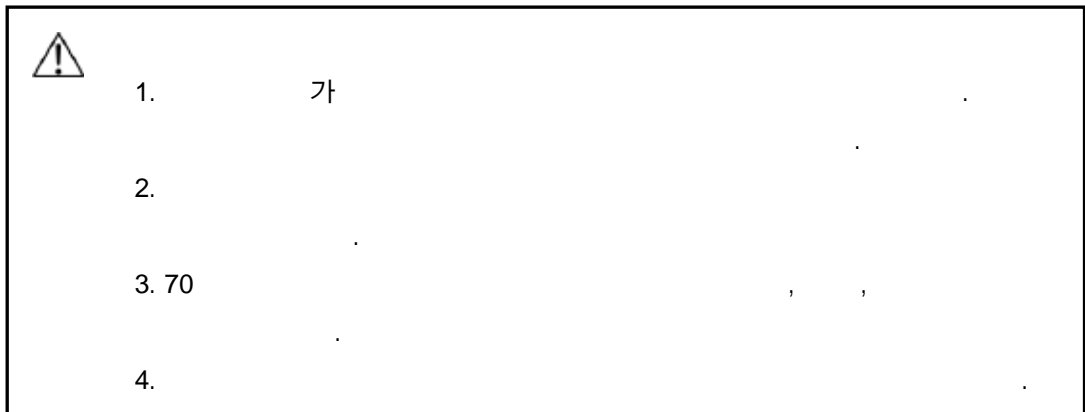
4.3.2.



## 5.

### 5.1.

- :
- : 80mm
- :  $60 \pm 5 \mu\text{m}$
- :  $\text{Ø}50\text{mm}$
- :



### 5.2.

