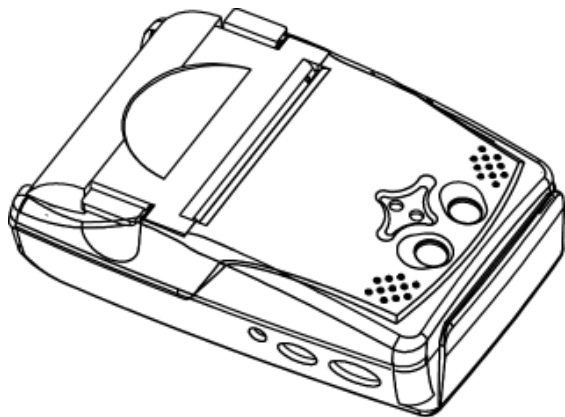


Operator's Manual

PORTI-SC30

(2)

Rev. 3.0



가 448 ,

3 501

: +82-2-2107-3700

: +82-2-2107-3707

<http://www.woosim.com>

| Copyright

PORTI-SC30 2

Copyright 2010

|



|

가

|

!

- u (75.4 x 112 x 34.65mm).
- u (225g)
- u
- u (80mm/sec, MAX)
- u (203dpi : 8dots/mm)
- u UART(RS-232C or TTL) , Bluetooth Ver2.1+EDR
IrDA Ver1.0(SIR)[], USB[]
- u , , LED
- u (MSR : Magnetic Stripe Reader)
- u ,
- u CLAMSHELL
- u 가
- u - ,
- u Microsoft Windows XP / VISTA / 7 / CE / Linux / Android
- u : 1.5m ()
- u : (XON/XOFF)
- u



I

U

: -10°C to 50°C

: 30% to 80%

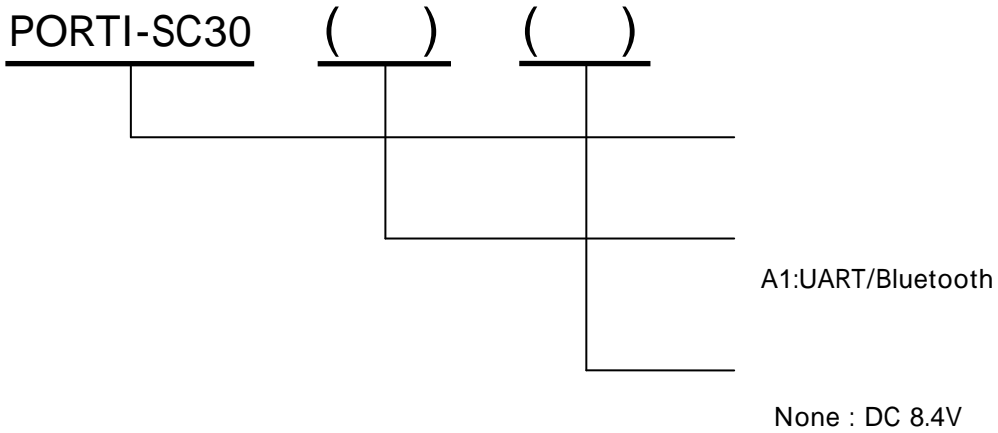
IrDA

U

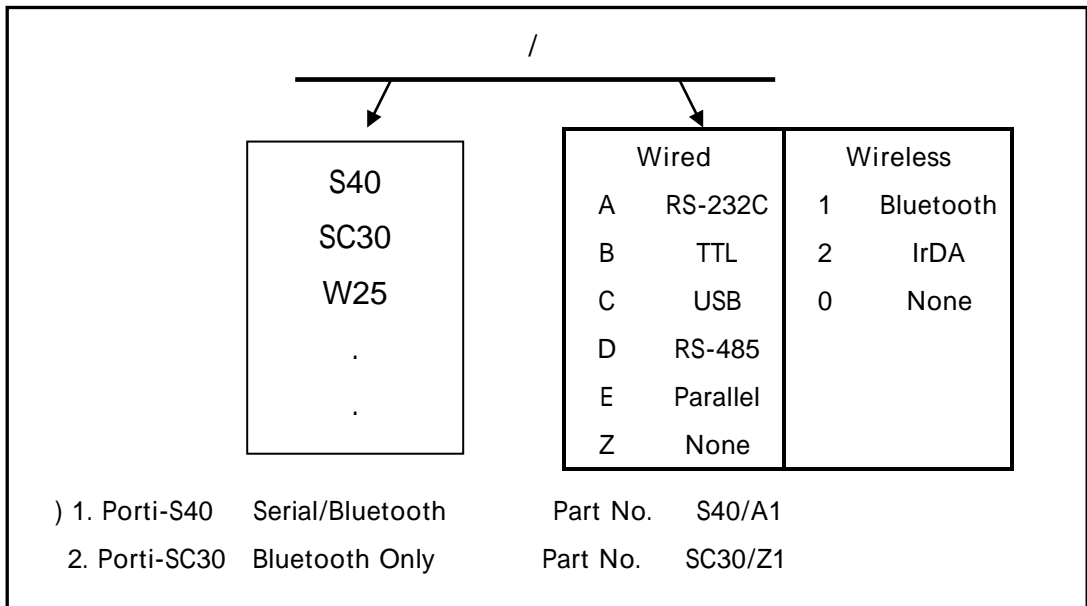
- 1.6
 - 1.1.6
 - 1.2. Part Number6
 - 1.3.7
- 2.9
 - 2.1.9
 - 2.2.10
 - 2.2.1.10
 - 2.2.2.11
 - 2.3.12
 - 2.4.13
 - 2.4.1.13
 - 2.4.2.13
 - 2.4.3.14
 - 2.5.15
- 3.22
 - 3.1. UART(RS-232C or TTL)22
 - 3.2. IrDA23
 - 3.3.23
- 4.24
 - 4.1.24
 - 4.2.25
- 5.26
 - 5.1.26
 - 6.2.26

1.

1.1.



1.2. Part Number



1.3.

	42cpl (MAX)
	: 9*24dots, 12*24dots : 16*24dots, [24*24dots]
	Simplified/Traditional Chinese, Arabic, Cyrillic, Russian, Turkish, Greek, Japanese, Persian, Latin9 and Others upon request.
	203dpi, 8dots/mm
	2 (48mm, 384dots)
	80mm /sec(MAX)
	75.4 x 112 x 34.65mm
	225g (&)
	UART(RS-232C or TTL), Bluetooth Ver 2.1+EDR IrDA Ver1.0 (SIR) [], USB[]
	(57mm, 30ø)
	1 : Code128, Code39, I2/5, Code93 UPC, EAN, KAN, JAN, CODABAR 2 : PDF417, QR Code, DATA Matrix
	Microsoft Widows XP / VISTA / 7 Windows CE, Linux, Android
	MCU : 32bits RISC, FLASH : 4 M bytes, RAM : 8 M bytes 1M bytes
MSR	ISO/IEC 7810, ISO/IEC 7811 (1/2 Track 2/3 Track)
	가 7.4V DC, 1200mAh ()
	1
	(100~250V AC 50~60Hz) (8.4VDC/0.8A), - 4

(...)

		-10°C ~ 50°C () -10°C ~ 70°C ()
		30% - 80% () 10% - 90% ()
	Mechanical	37,000,000 lines
	Head	50 Km

< 1 >

2.

2.1.



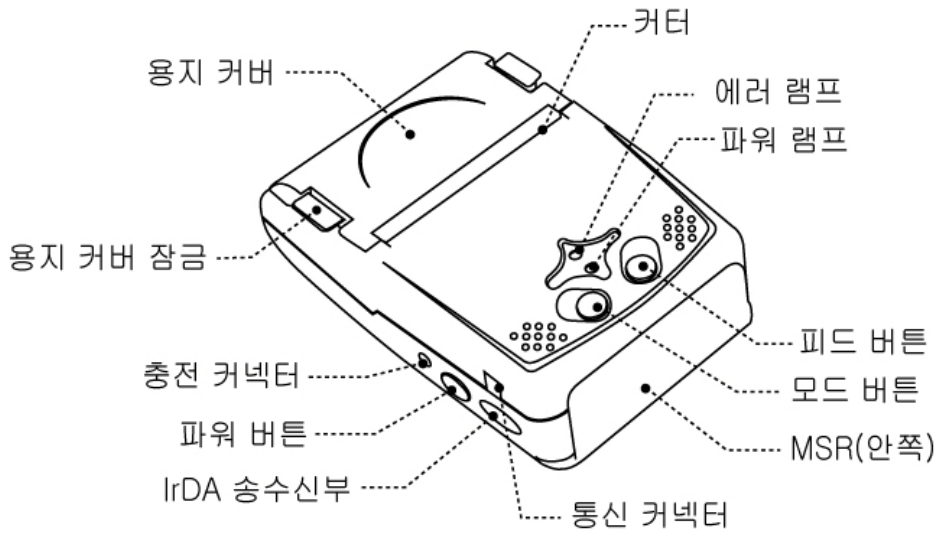
PORTI-SC30



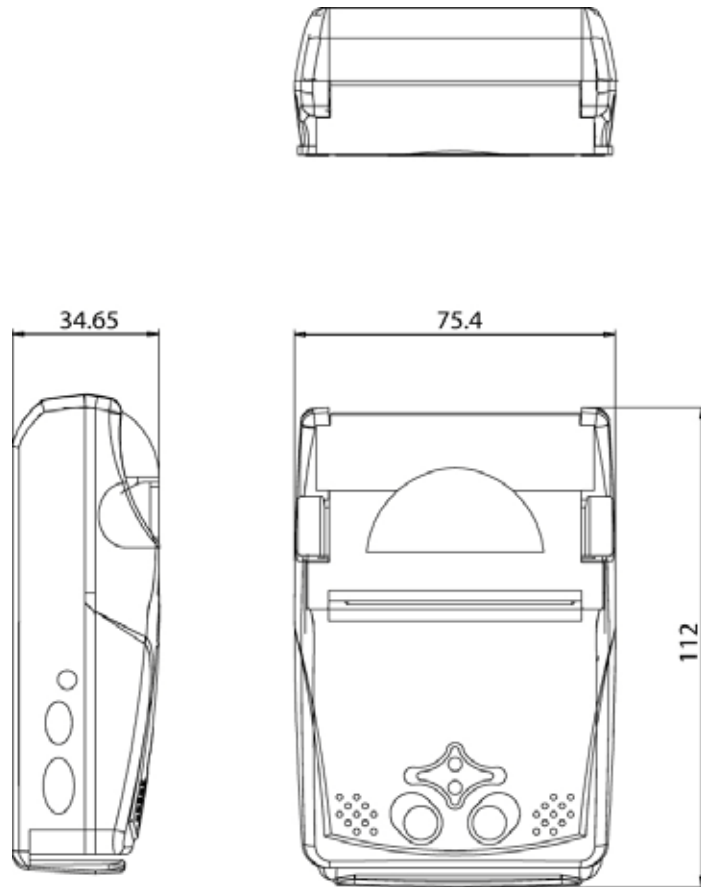
가

2.2.

2.2.1.



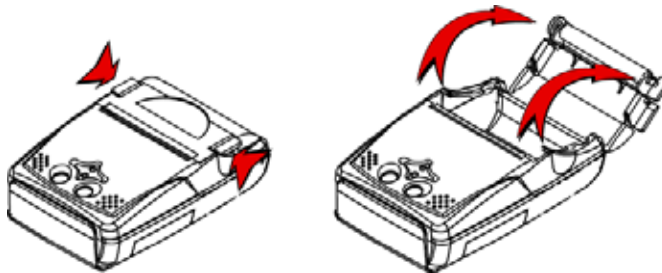
2.2.2.



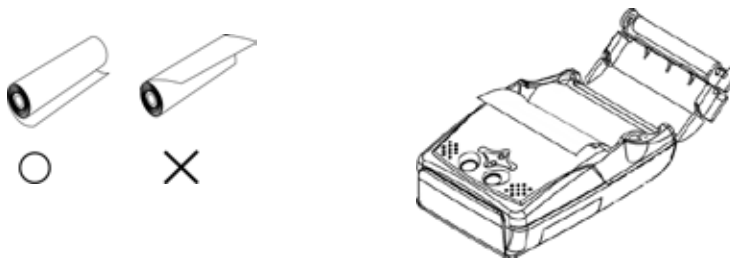
2.3.

이 단계를 완료하면, (가)가 (가)가 됩니다.

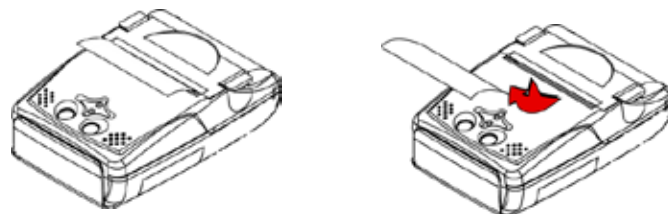
1. (가)가 (가)가 됩니다.
2. (가)가 (가)가 됩니다.



3.



4.



2.4.

2.4.1.

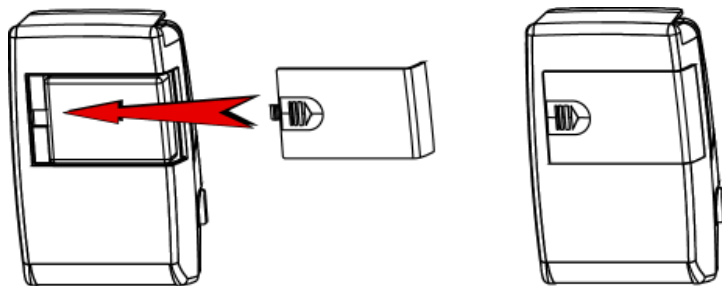
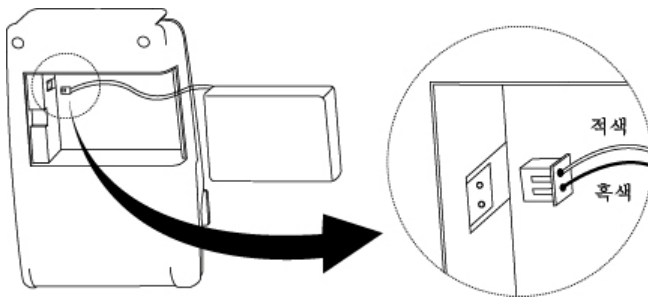
: DC 8.4V / 0.8A

2.4.2.



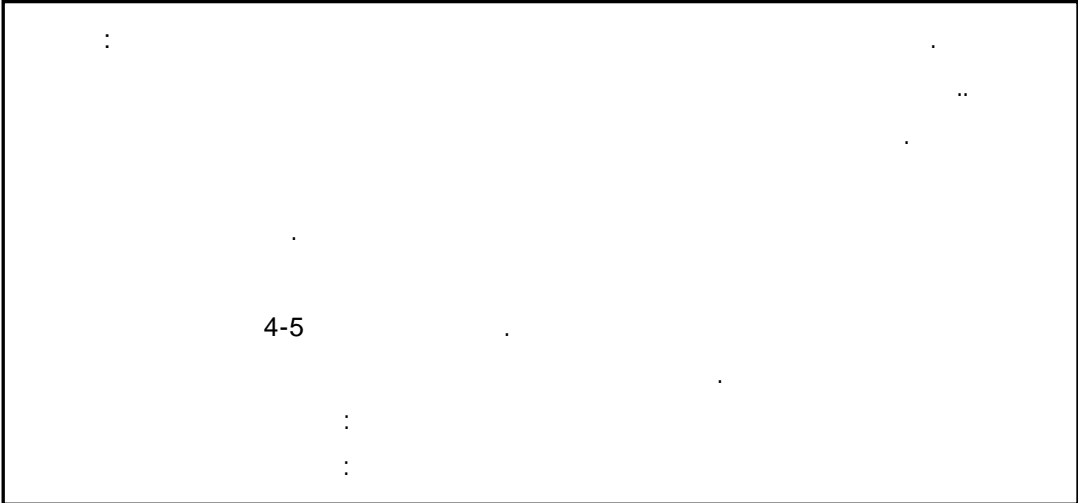
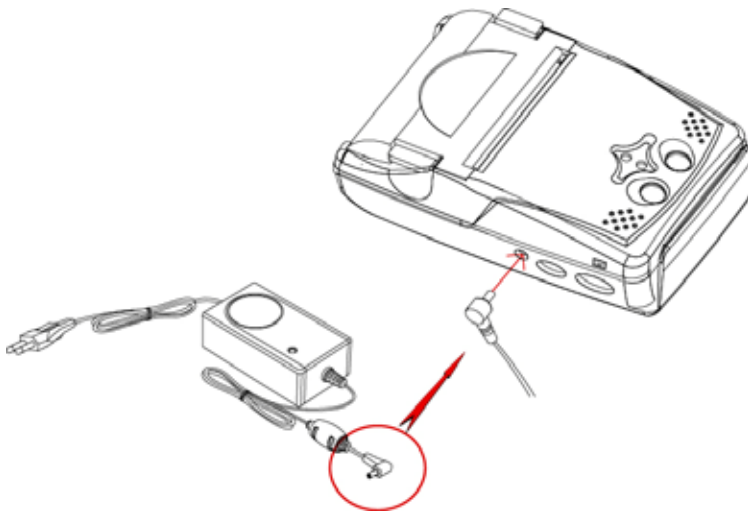
1)

- 가 가



2.4.3.

가



2.5.

< M37702 (OLD) Version >

. (2)
 | : . ()
 | : . ()
 []
 RS-232C/ 9600 bps/ 8 data bit / No parity/ Density low / Use / Low
 Bluetooth/57600 bps/7 data bit/Odd parity/Odd parity/Density high / No use/
 Medium 1 ,

u 가 5
 ® 가 1 가 1 ..
 ® 2 가 3 , 가
 Bluetooth
 u 1 , 가 2 , 가 4 .
 ® 3 , 가 7 , 가
 57600 bps
 u 1 가 3 , 가 2 .
 ® 1 , 가 1 ,
 가 7 data bit
 u 1 , 가 4 , 가 1 .
 ® 2 , 가 3 , 가
 Odd parity
 u 1 , 가 5 , 가 1 .
 ® 2 , 가 3 , 가
 Density high
 u 2 , 가 7 , 가 2 .
 ® 1 , 가 1 , 가
 No use .

U 1 , 가 8 , 가 1 .
® 1 , 가 2 , 가
Medium 1 .

Bluetooth/57600 bps/7 data bit/ Odd parity/ 2 stop bit/ Density high
/ No use / Medium 1

* M37702 (OLD) Version

	()	()		
			IrDA Ver.	Bluetooth Ver.
Communication Port	1	1	RS-232C	RS-232C
		2	Protocol IrDA	Protocol Bluetooth
		3	Standard IrDA	Bluetooth
		4	Protocol 232C	-
Baud Rate	2	1	1200 bps	
		2	2400 bps	
		3	4800 bps	
		4	9600 bps	
		5	19200 bps	
		6	38400 bps	
		7	57600 bps	
		8	115200 bps	
Data Bit	3	1	7 Data bit	
		2	8 Data bit	
Parity Bit	4	1	No Parity	
		2	Even Parity	
		3	Odd Parity	
Density	5	1	Density Low	
		2	Density Medium	
		3	Density High	
Protocol	6	1	Default Protocol	
		2	Lotte Protocol	
Mark	7	1	No use	
		2	Use	
Sensor	8	1	Low	
		2	Medium1	
		3	Medium2	
		4	High	

< M16C, ARM (NEW) Version >

| : . (3)
 | : . (Error Lamp)
 | : . (Power Lamp)

[] :
 UART / 9600 bps / 8 data bit / No parity / 1 stop bit / Density low
 / Mark use / Sensor low / Power down 5 minute

Bluetooth / 57600 bps / 7 data bit / Odd parity / 2 stop bit / Density high
 / Mark no use / Sensor medium1 / Power down no use

U 가 5
 ® 가 1 가 1
 ® 2 가 3 , 가
 Bluetooth
 U 1 , 가 2 , 가 1
 ® 3 , 가 4 , 가
 57600 bps
 U 1 3 , 가 2
 ® , 가 1
 가 7 data bit
 U 1 , 가 4 , 가 1
 ® 1 , 가 2
 가 Odd parity
 U 1 , 가 5 , 가 1
 ® 1 , 가 3 , 가
 2 stop bit

U 1 , 가 6 , 가 1 .
 ® 2 , 가 3 , 가
 Density high
 U 1 , 가 7 , 가 2 .
 ® 1 , 가 1 , 가
 No use
 U 1 , 가 8 , 가 1 .
 ® 1 , 가 2 , 가
 Medium 1
 U 1 , 가 9 , 가 6 .
 ® 1 , 가 1 ,
 No use

Bluetooth / 57600 bps / 7 data bit / Odd parity / 2 stop bit / Density high
 / Mark no use / Sensor medium1 / Power down no use

* M16C , ARM (NEW Version)

	()	()		
			IrDA Ver.	Bluetooth Ver.
Communication Port	1	1	UART	UART
		2	Protocol UART	Protocol UART
		3	Raw IrDA	Bluetooth
		4	Protocol IrDA	Protocol Bluetooth
		5	Standard IrDA	
Baud Rate	2	1	9600 bps	
		2	19200 bps	
		3	38400 bps	
		4	57600 bps	
		5	115200 bps	
Data Bit	3	1	7 Data bit	
		2	8 Data bit	
Parity Bit	4	1	No Parity	
		2	Odd Parity	
		3	Even Parity	
Stop Bit	5	1	1 Stop bit	
		2	2 Stop bit	
Density	6	1	Density Low	
		2	Density Medium	
		3	Density High	
Mark	7	1	No use	
		2	Use	
Sensor	8	1	Low	
		2	Medium1	
		3	Medium2	
		4	High	

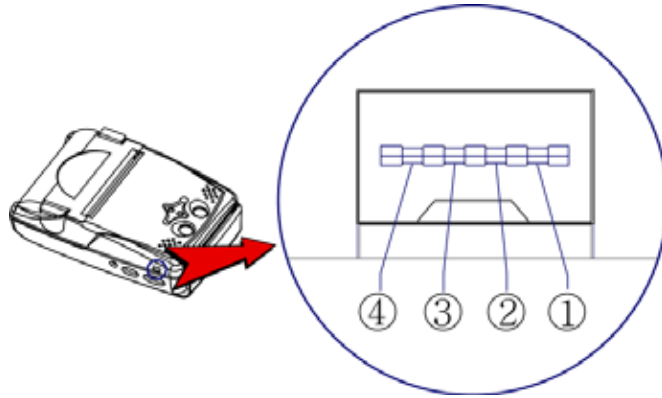
(...)

	()	()	
Power Down	9	1	No use
		2	1 minute
		3	2 minute
		4	3 minute
		5	4 minute
		6	5 minute

< 3 >

3.

3.1. UART(RS-232C or TTL)



PORTI-SC30 UART(RS-232C or TTL) USB 가 ,
 4 USB

UART(RS-232C or TTL)

1	TxD	Output	Transmit Data
2	RxD	Input	Receive Data
3	CTS	-	-
4	GND	-	Ground

USB

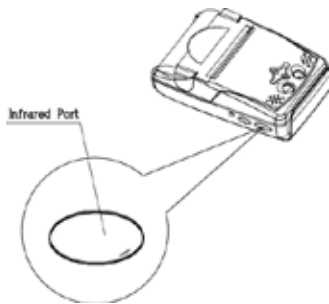
1	VCC
2	DATA “-“
3	DATA “+“
4	Ground

Applicable connector : SUNG KYUNG (CM-720)

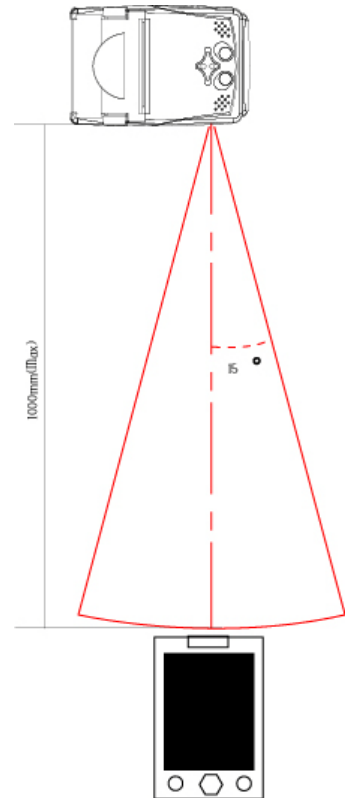
: 가

3.2. IrDA

PORTI-SC30



- 1) IR 가 PDA 가
- 2) PDA 50cm 15°

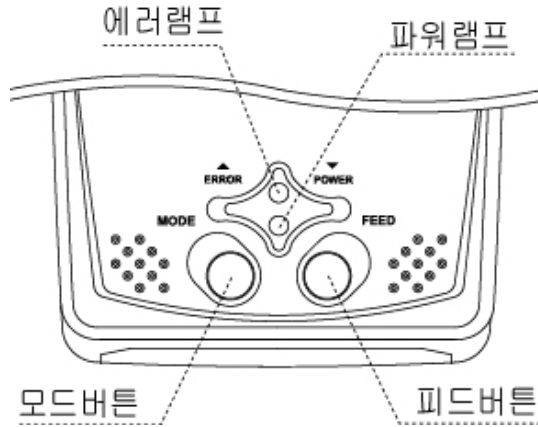


3.3.

	Bluetooth Ver2.1 + EDR / Class2 (10m)
	2.4GHz ISM BAND
	57600bps Fixed.
	8 Data bit Fixed.
	No parity Fixed.
	1 Stop bit Fixed.

4.

4.1.



u

- :
- :

(2.5.)

: UART (RS-232C or TTL)

u

- : , 가
가 .

- : 가 , 가 , ,

4.2.

가

- 1.
- 2.
- 3.
- 4.
- 5.

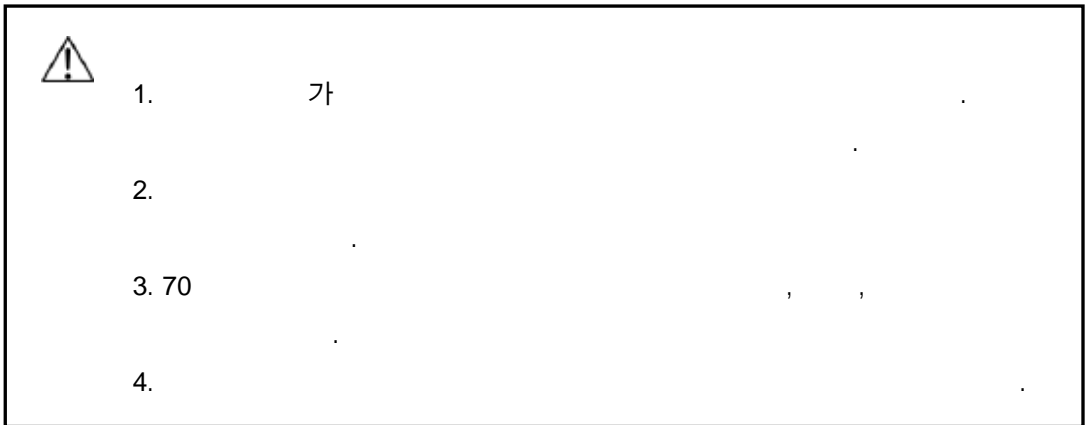
()

가

5.

5.1.

- :
: 57mm
: $60 \pm 5 \mu\text{m}$
: $\text{Ø}30\text{mm}$
:



6.2.

