

Woosim Printer Driver

Windows 8 installation guide

WOOSIM SYSTEMS Inc.
#501, Daerung Technotown 3th,
448, Gasan-Dong, GeumChun-Ku,
Seoul, Korea
Tel : +82-2-2107-3700
Fax : +82-2-2107-3707
URL: <http://www.woosim.com>

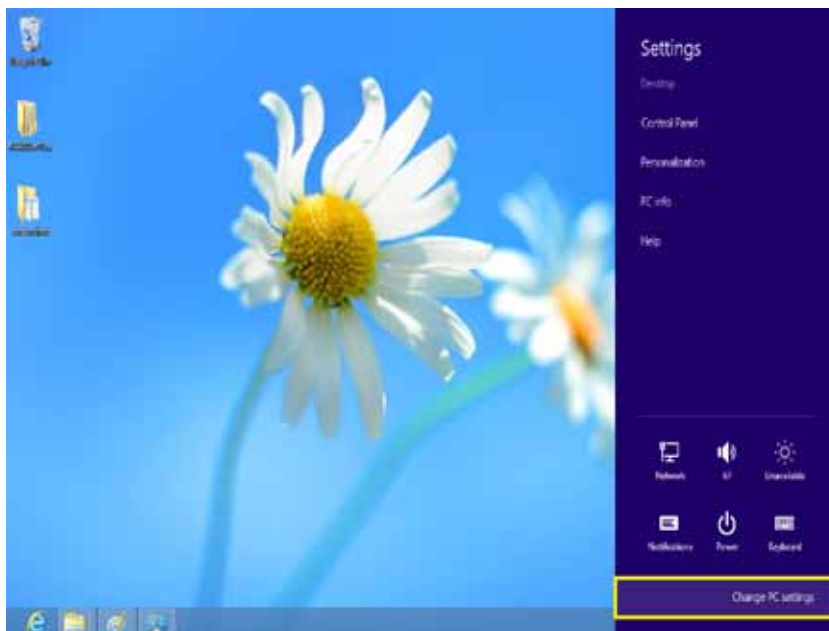


<http://www.woosim.com>

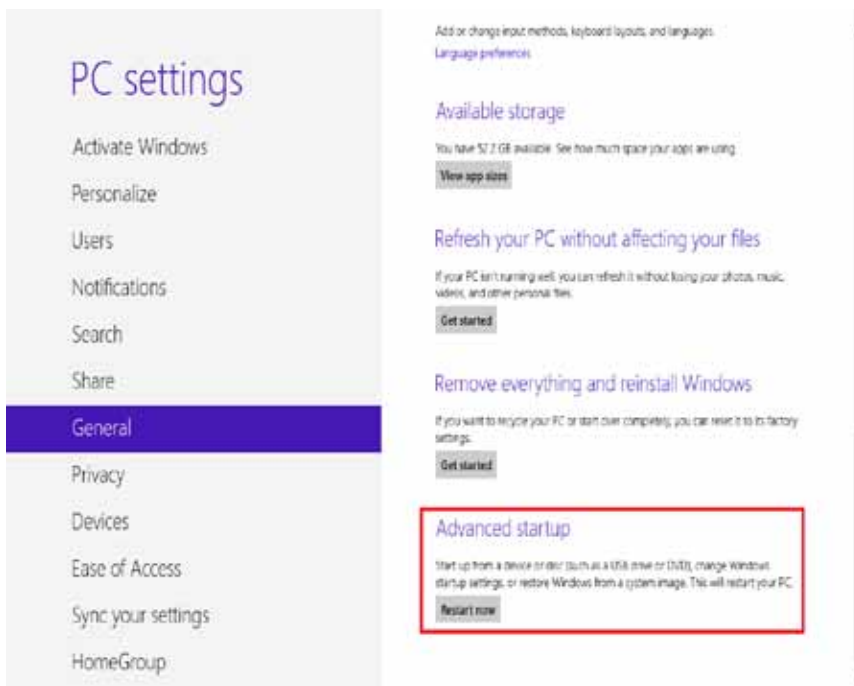
1. Click the **Settings** on the right side of the desktop background.



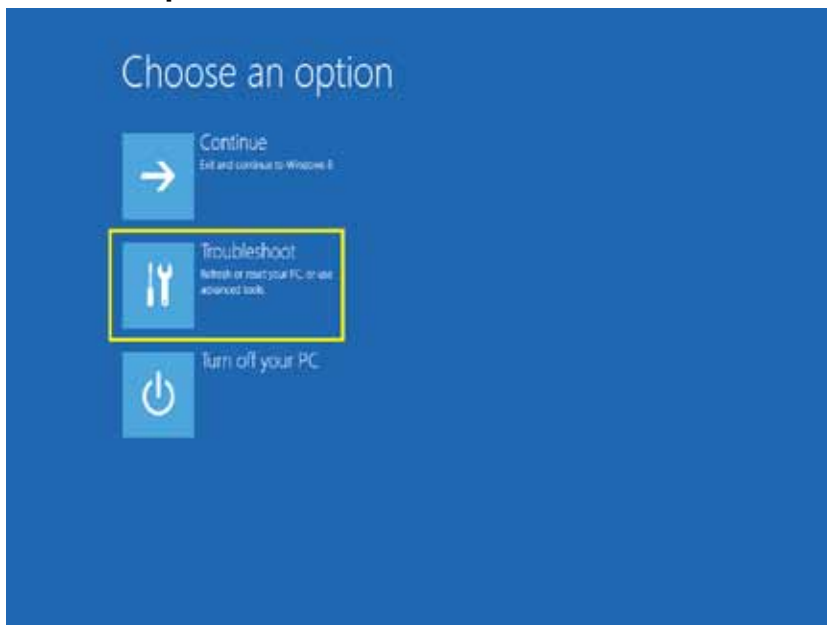
2. Click **Change PC settings**.



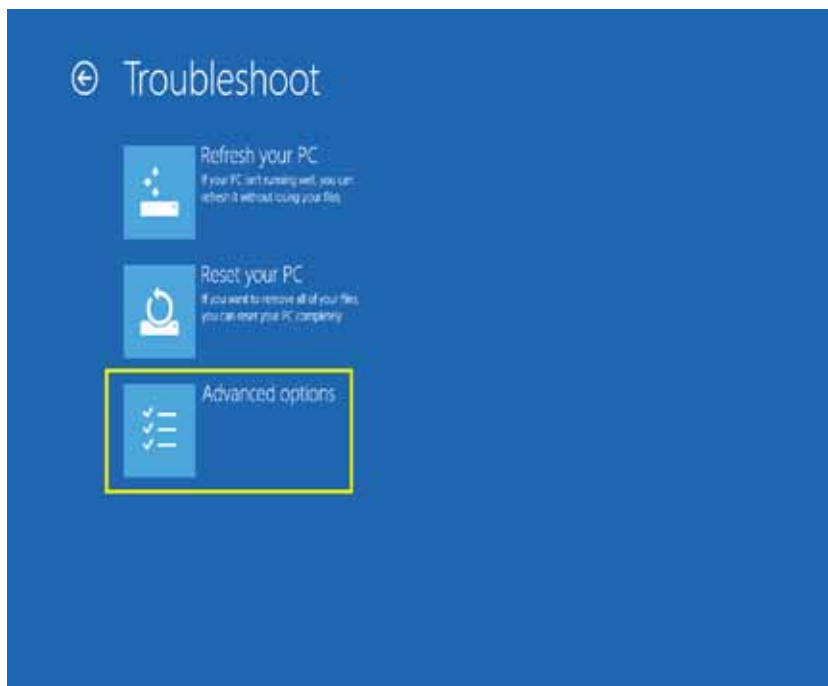
3. Click the PC settings – General – **Advanced startup**.



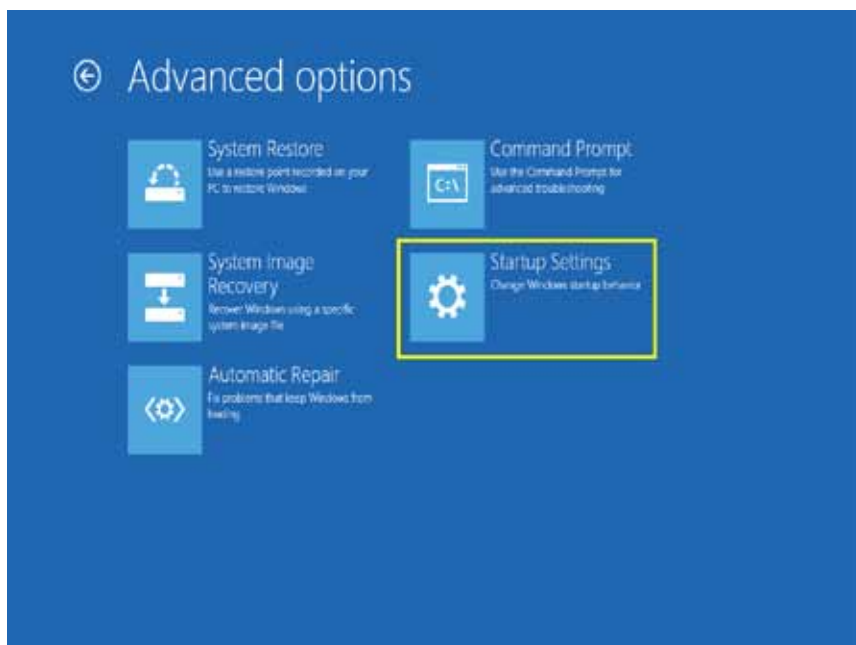
4. Choose the option - **Troubleshoot**.



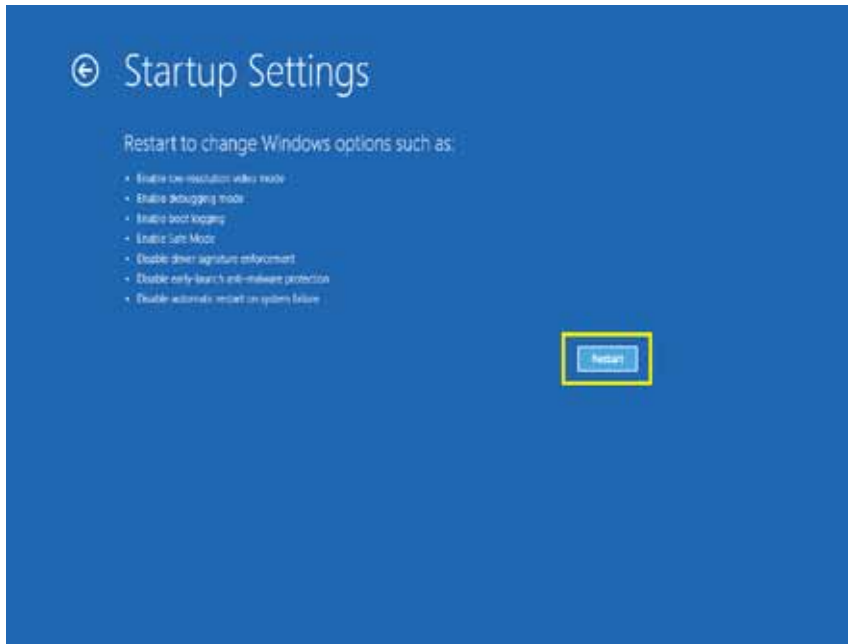
5. Choose **Advanced options**.



6. Choose **Startup Settings**.



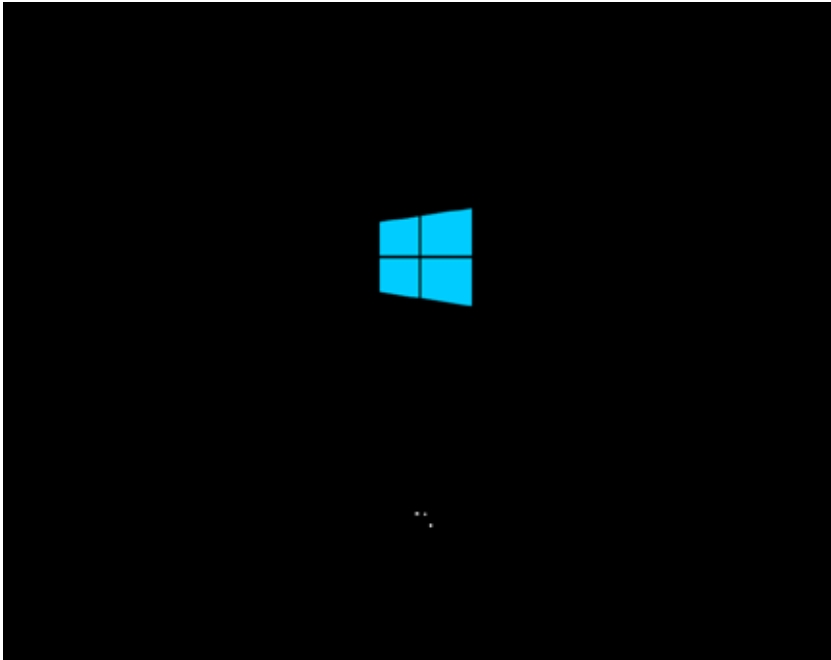
7. Click **Restart**.



8. Press the **"F7"** button.



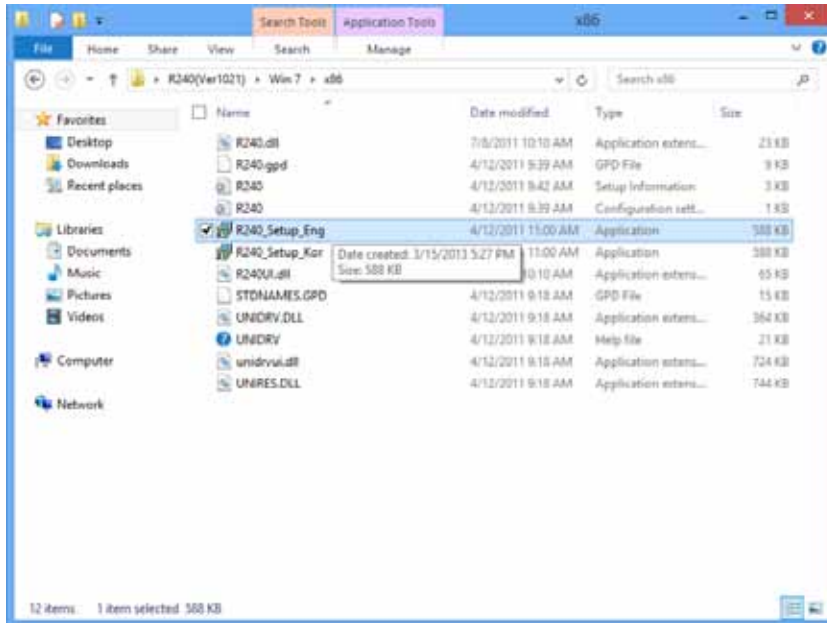
9. Windows will reboot.



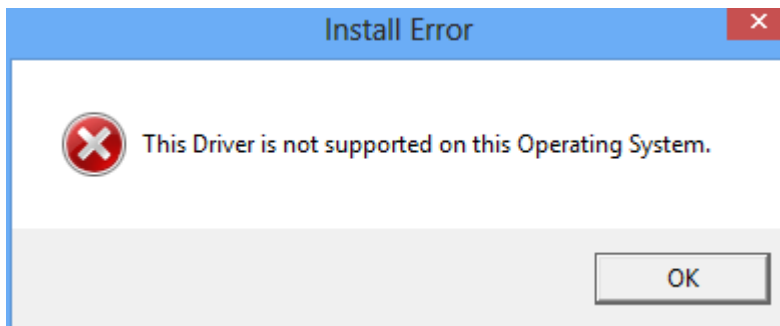
10. After rebooting, we will install the printer drivers.



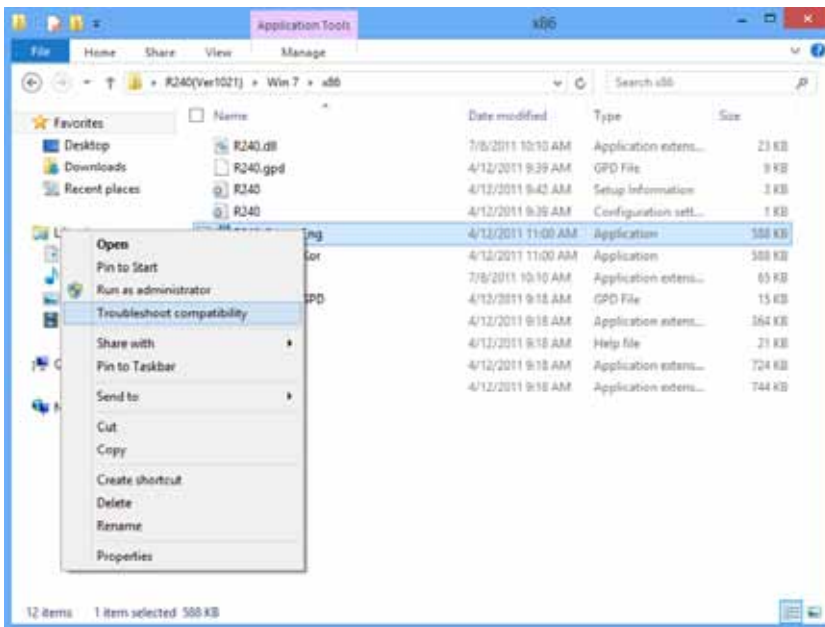
11. Run the **Setup_Eng** under windows driver installation file.



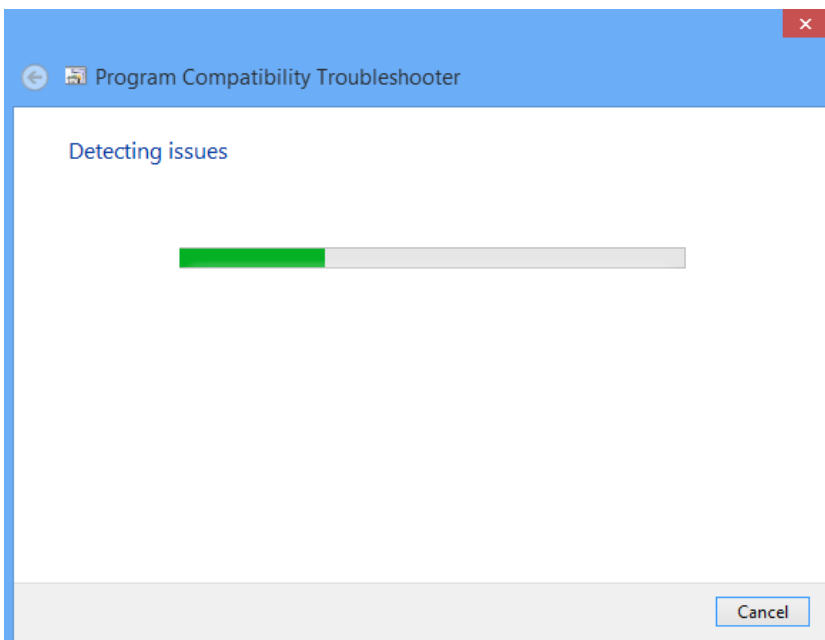
12. The following message will be displayed. Please click OK.



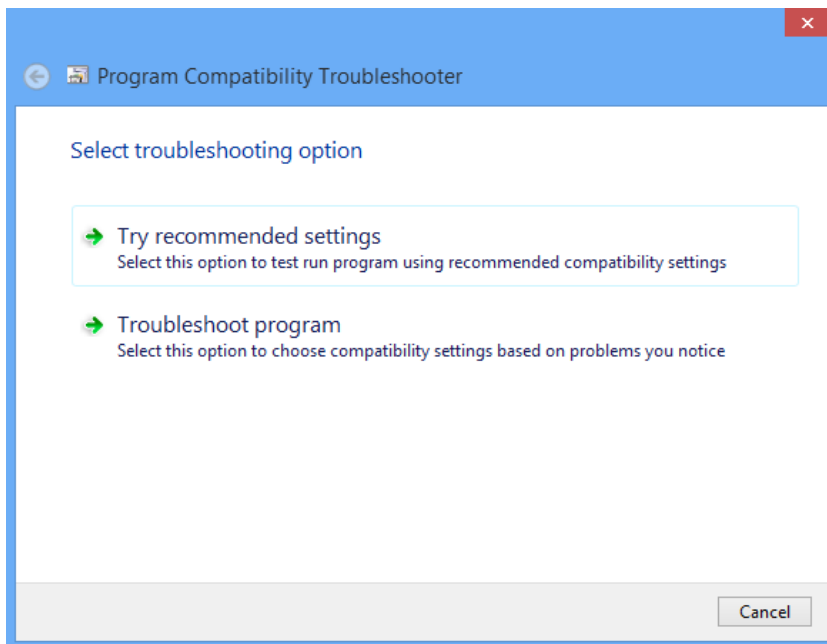
13. Click the **“Troubleshoot compatibility”**.



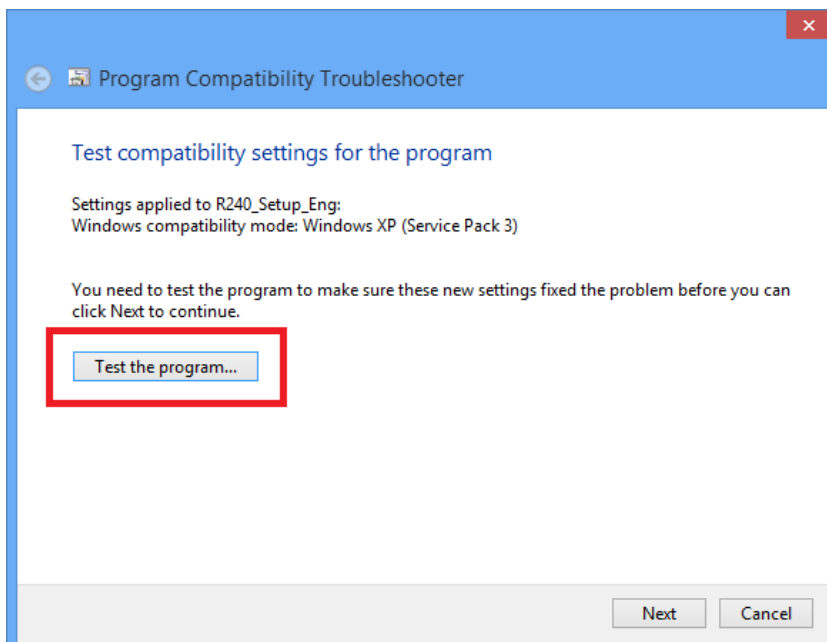
The following window will be displayed.



14. Choose **“Try recommended settings”**.



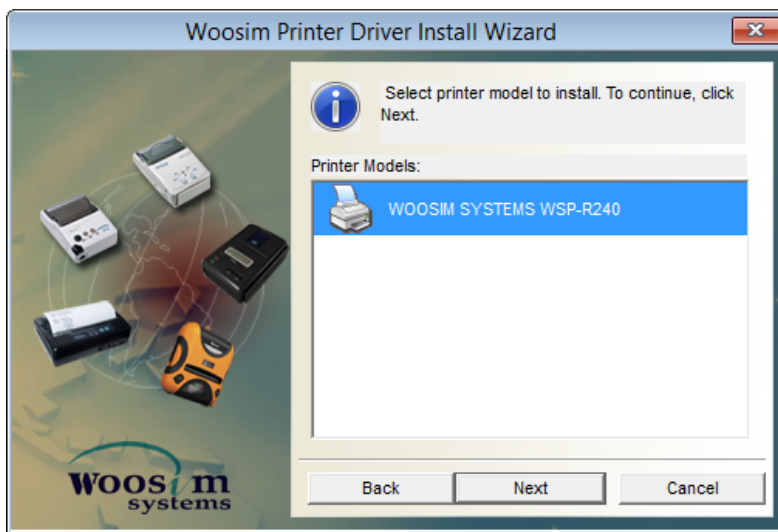
15. Click the **“Test the program”** button.



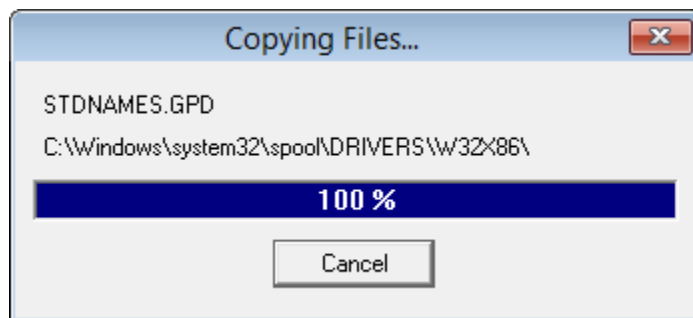
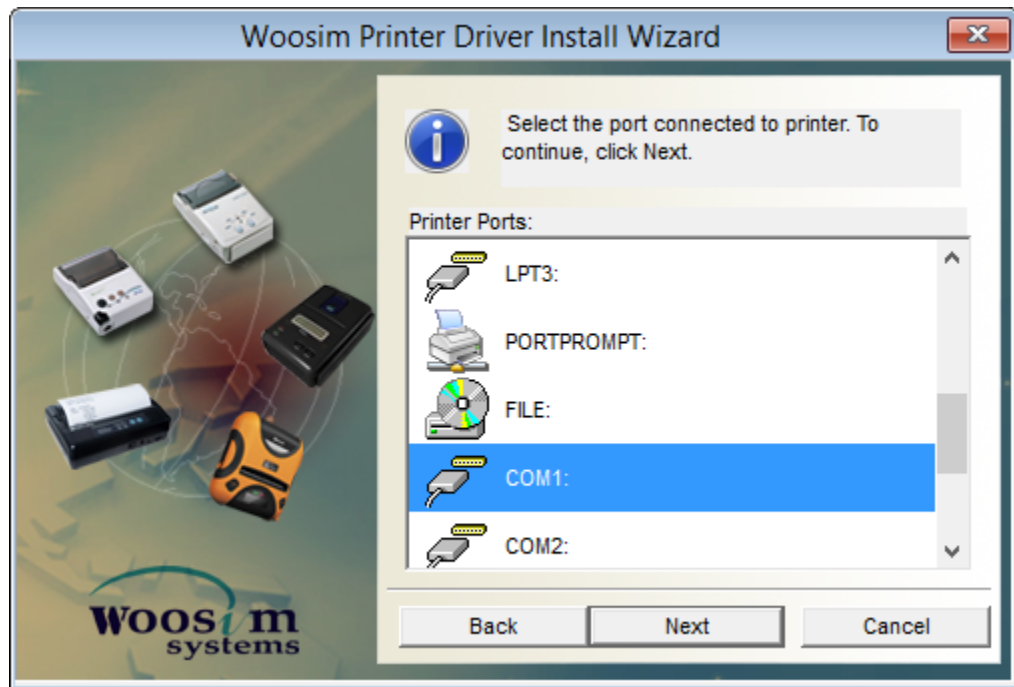
16. "Woosim Printer Driver install wizard" will be displayed.



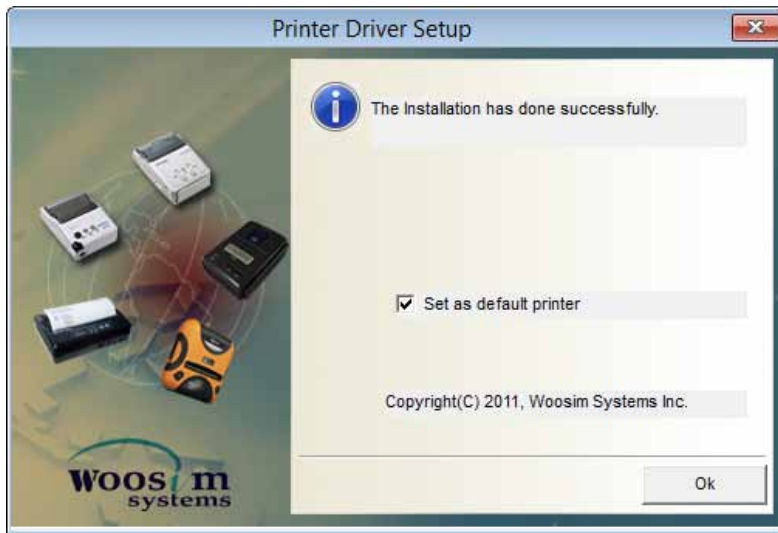
17. Select the printer and then click the "Next" button.



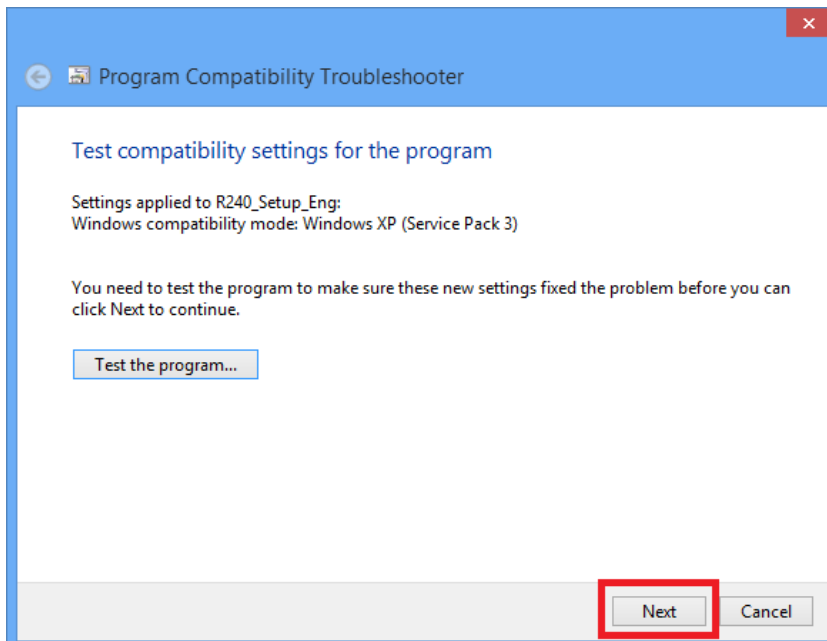
18. Select the COM1 port.



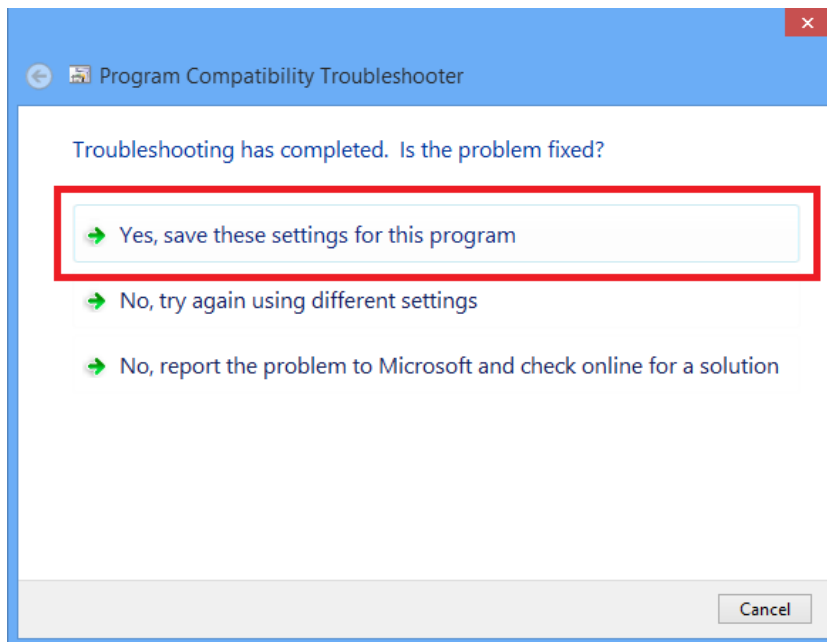
19. The printer driver installation has been completed.



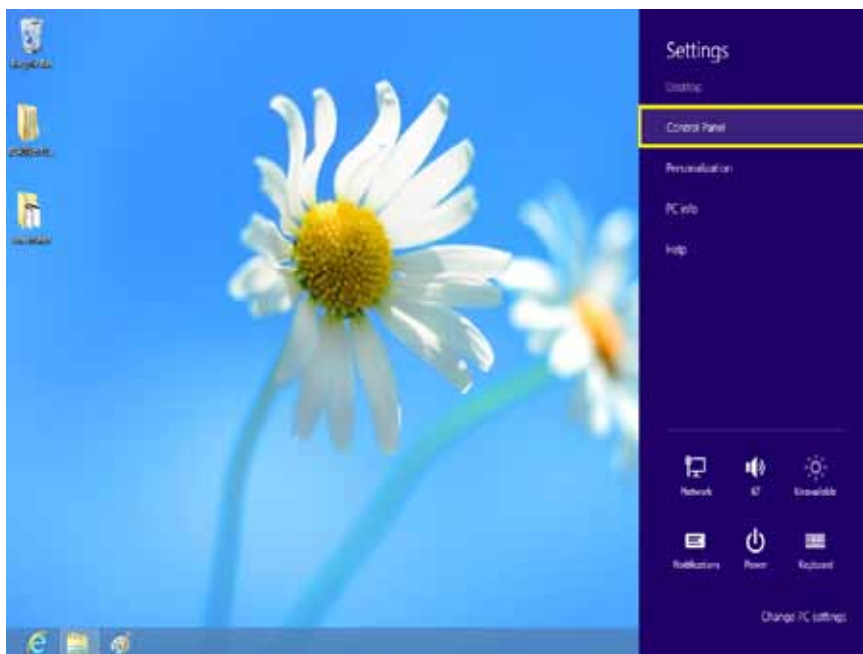
20. Click the “Next” button.



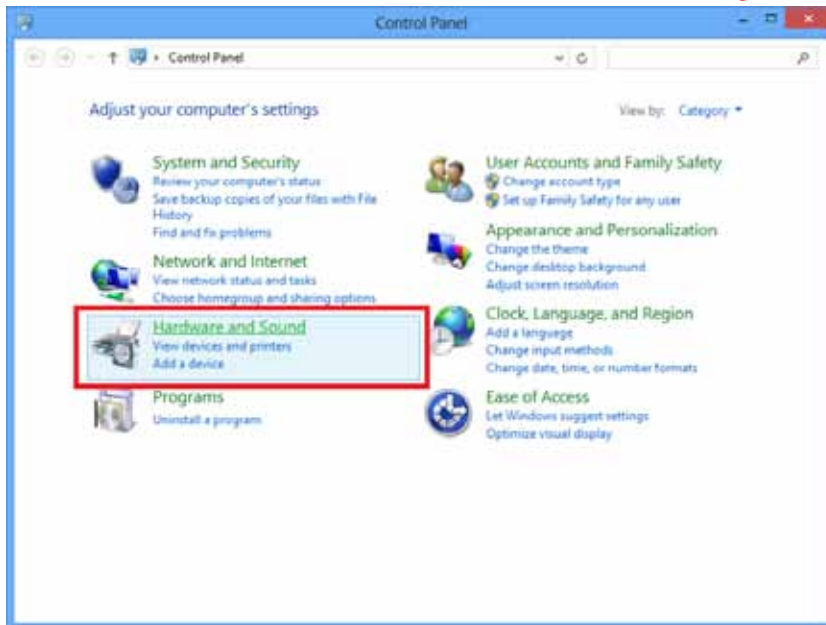
21. Select the **“Yes, save these settings for this program”**.



22. Click the Settings – **Control Panel**.



23. Click the Hardware and Sound – **View devices and printers.**



24. You can check the installed printer driver.

